



SPARE PARTS EXPLODED VIEW
GAS WALL BOILERS

Models

GENUS 23 MFFI

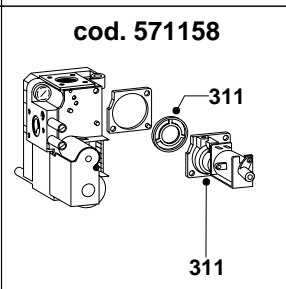
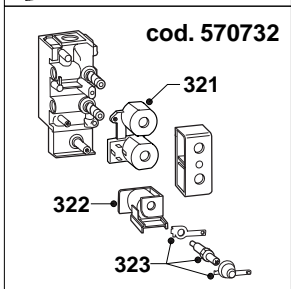
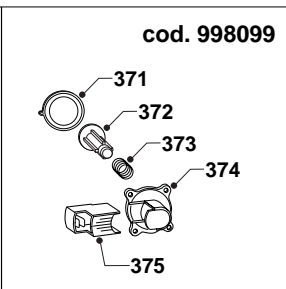
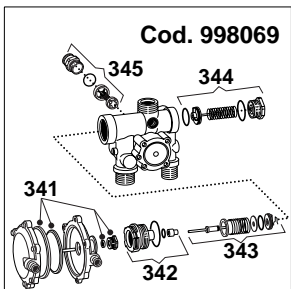
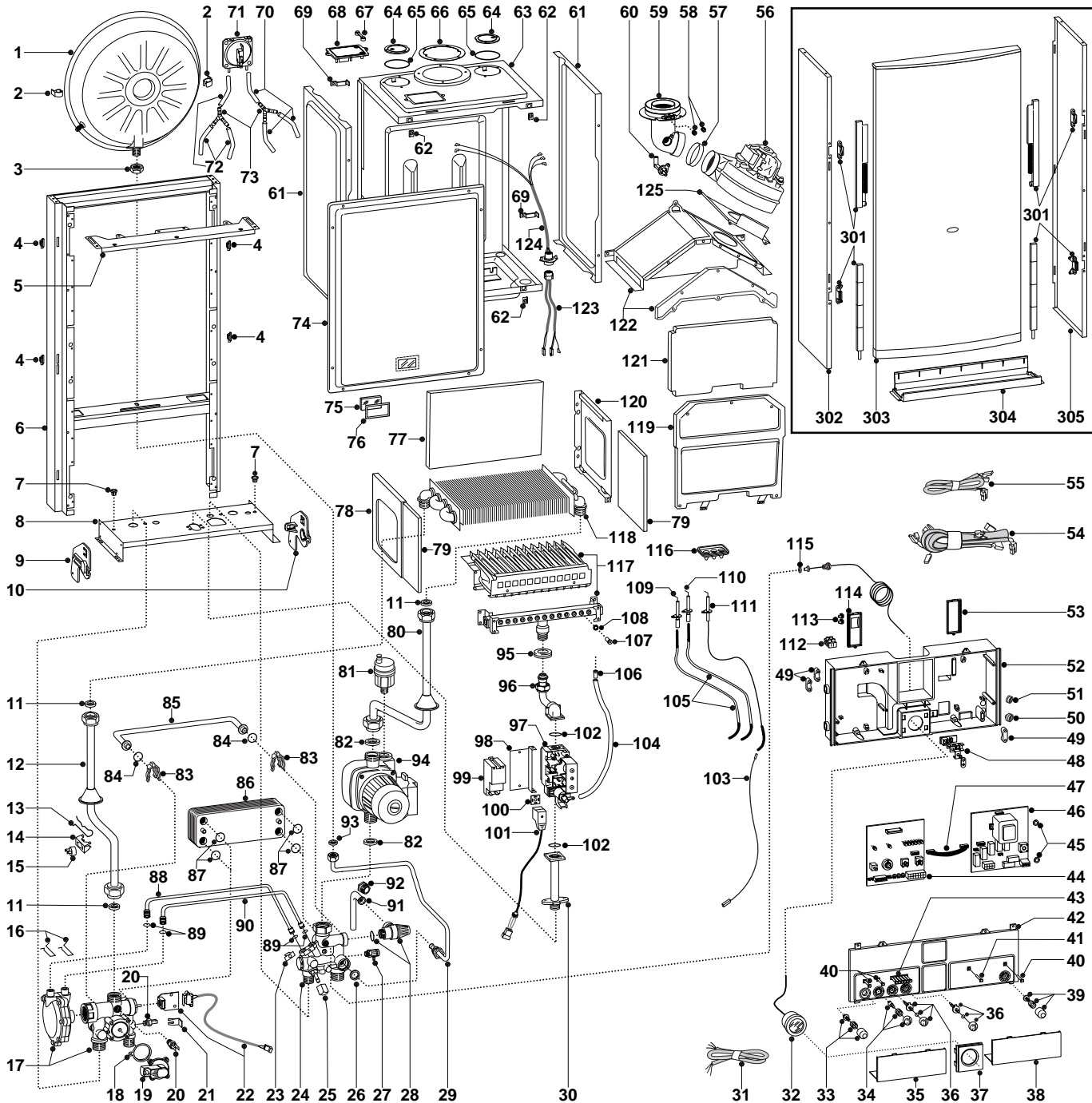
GENUS 27 MFFI

GENUS 23 RFFI

GENUS 27 RFFI

Edition 2 of 15 March 2000





MODELS	CHARACTERISTICS	SERIAL NO: VALIDITY	REF.
GENUS 23 MFFI	METHANE	0004000563	A
GENUS 23 MFFI	LPG	0004000564	B
GENUS 27 MFFI	METHANE	0004000565	C
GENUS 27 MFFI	LPG	0004000566	D
GENUS 23 RFFI	METHANE	0004000502	E
GENUS 23 RFFI	LPG	0004000504	F
GENUS 27 RFFI	METHANE	0004000505	G
GENUS 27 RFFI	LPG	0004000506	H

PART.	CODE	DESCRIPTION	REF.	NOTE
1	573294	Expansion vessel		
2	999228	Expansion vessel insert		
3	573244	3/8" lock nut		
4	574302	Casing support bracket (Plastic)		
5	572984	Casing support bracket		
6	-----	Frame		11
7	570772	Cable holder		
8	-----	Hydraulic support		11
9	998042	Hydraulic support bracket (L/H)		
10	998041	R.H. hydraulic support bracket		
11	573520	Gasket 3/4"		
12	997199	Pipe (main exchanger - 3 way group)	ABEF	
12	997200	Pipe (main exchanger - 3 way group)	CDGH	
13	998043	Fixing spring (Thermostat)		
14	997224	Fixing spring (overheat thermostat)		
15	997206	Thermostat (overheat)		
16	573809	Spring (water venturi)	ABCD	
17	573293	Flow group	EFGH	
17	998069	3-way pressure gauge valve group	ABCD	
18	571547	Diaphragm (main flow switch)		
19	998099	Main circuit flow switch		
20	569236	Temperature probe (C.H.W.)		
21	573824	Bracket (M/Flow Micro Switch)		
22	998921	Microswitch	ABCD	
23	571838	Pipe fixing clip	ABCD	
24	573318	Return group	EFGH	
24	998071	Return group	ABCD	
25	571559	Filling cock knob		
26	573528	Gasket 1/2"		
27	573727	Manual vent cock		
28	573172	Safety valve (1/2" 3 bar)		
29	573311	Pipe (expansion vessel)		
30	997202	Gas inlet pipe		
31	998012	Cable (power supply)		
32	571649	Pressure gauge		
33	573300	Release push button kit		
34	573302	Summer/Winter selector kit		
35	571629	L.H. inspection cover		
36	573301	Regulation knob kit		
36	573328	Front panel cover	EFGH	
37	572948	Cover (Pressure Gauge)		
38	571628	Inspection Cover (R.H).		
39	573303	On/fff push button kit		
40	571550	Power Indicator L.E.D. lens		
41	572659	Flue L.E.D. cover (white)		
42	998790	Control panel cover	ABCD	
42	998817	Front cover panel	EFGH	
43	571551	Temperature L.E.D. lens bank		
44	953033	E C-MI/FFI P.C.B.		
45	569711	Nylon bush (10mm)		
46	952981	Printed circuit board (EI A-MFFI)		
47	952610	Cable (P.C.B.)		
48	-----	Terminal board		11
49	571562	Cable clamp		
50	569458	Cable holders silicone D.2		
51	573534	Cable holder D.75		
52	-----	Control panel		11
53	569713	Cable holder cover (R.H.)		
54	997724	High voltage wiring	ABCD	
54	997819	High voltage wiring	EFGH	
55	998047	Low voltage wiring	EFGH	
55	998055	Low voltage wiring	ABCD	
56	572990	Fan	CDGH	
56	998807	Fan	ABEF	
57	573343	Gasket (fan inlet)		

PART.	CODE	DESCRIPTION	REF.	NOTE
58	573326	Flue intake plug		
59	573333	Flue (exhaust manifold / header)		
60	573314	Venturi (exhaust/manifold header)		
61	573247	Panel (sealed chamber - side)		
62	570717	Spring (fastening)		
63	-----	Sealed chamber box-shaped casing		11
64	573330	Air return cover		
65	573865	Flue gasket		
66	573337	Gasket (flue manifold)		
67	573329	Pressure intake cover		
68	997203	Support plate (Air pressure switch)		
69	998108	Cable clamp		
70	569662	Silicone pipe		
71	571651	Air pressure switch		
72	571575	Silicone pipe (positive signal)		
73	573327	"Y" piece (air pressure)		
74	573344	Panel (front - sealed chamber)		
75	998075	View window glass		
76	998076	View window glass gasket		
77	998130	Back insulation panel	CDGH	
77	998132	Back insulation panel	ABEF	
78	573243	Combustion panel (L.H.)		
79	998128	Side insulation panel		
80	572906	Pipe (main exchanger - pump)	CDGH	
80	573313	Pipe (main exchanger - pump)	ABEF	
81	564254	Auto air vent		
82	569387	Gasket 1"		
83	573808	Spring (by-pass pipe)	EFGH	
83	998064	Spring (by-pass pipe)	ABCD	
84	571449	O-ring	EFGH	
84	998077	O-ring gasket	ABCD	
85	573219	By-pass pipe	EFGH	
85	998065	By-pass pipe	ABCD	
86	571646	Secondary exchanger (p-type 23kW)	AB	
86	573295	Secondary exchanger (p-type 27kW)	CD	
87	573825	O-Ring (secondary exchanger)	ABCD	
88	573086	Pipe (main flow switch - positive signal)	ABCD	
89	571807	O-Ring (20-18)	ABCD	
90	573087	Pipe (main flow switch - negative signal)	ABCD	
91	573176	Pipe (safety valve outlet)		
92	998567	Safety valve outlet pipe ring nut		
93	573521	Gasket 3/8"		
94	570487	Oversize circulator with deaerator	CDGH	
94	997008	Standard circulator with deaerator	ABEF	
95	569443	Silicone seal		
96	573289	Pipe (gas valve/burner)		
97	570732	Gas valve (sit tandem)	ABCD	
97	571158	Gas valve (VK - without pilot burner outlet)	EFGH	13
98	573285	Spark Generator Support	ABCD	
98	998436	Igniter support	EFGH	
99	573023	Spark generator		
100	573022	Clamp	ABCD	
101	997661	Gas valve cable	EFGH	
101	999247	Gas valve cable	ABCD	
102	571965	O-Ring (13)		
103	571657	Cable (detection electrode/P.C.B.)		
104	573576	Compensation tube		
105	571662	Cable (ignition electrode)		
106	573325	Rivet		
107	570248	Burner jet (NG 1.25)	ACEG	
107	570251	Burner jet (LPG 0.72)	BDFH	
108	572138	Burner jet washer		
109	569561	Electrode (Ignition L.H.)		
110	569560	Electrode (Ignition R.H.)		
111	573441	Electrode (Detection)		

PART.	CODE	DESCRIPTION	REF.	NOTE
112	571787	Terminal board (two pole)		
113	569720	Blind grommet		
114	569714	Cable holder cover (L.H.)		
115	569390	Gasket 1/4"		
116	998147	Ignition electrode cable rubber		
117	572271	Burner 13 ramp (natural gas)	AE	
117	572277	Burner 13 ramp (LPG)	BF	
117	572343	Burner 15 ramp (natural gas)	CG	
117	572372	Burner 15 ramp (LPG)	DH	
118	998138	Main exchanger	ABEF	
118	998139	Main exchanger	CDGH	
119	572648	Combustion chamber panel (front)	CDGH	
119	997766	Panel (front)	ABEF	
120	573242	Combustion panel (R.H.)		
121	998129	Front insulation panel	CDGH	
121	998131	Front insulation panel	ABEF	
122	997767	Flue hood (sealed chamber)	ABEF	
122	998103	Flue hood	CDGH	
123	999119	Cable (P.C.B./Electroventilator/pressure gauge)		
124	998106	Ventilator-pressure gauge cable		
125	573465	Fixing plate (fan)	CDGH	
301	571993	Front panel runner kit		
302	573012	Case panel (L.H. side)		
303	997226	Case panel (front)		
304	997818	Case door insert		
305	573011	Case panel (R.H. side)		
311	571479	Modureg coil (H/Well 24V gas valve)	EFGH	
321	570712	Operator coils (Sit Tandem)	ABCD	
322	573740	Modureg coil (SIT 24V gas valve)	ABCD	
323	573745	Gas modulator cartridge	ABCD	
341	571446	D.H.W. diaphragm valve	ABCD	
342	998013	Heating actuator bush	ABCD	
343	571447	3-Way spring kit	ABCD	
344	571442	D.H.W. pressure switch kit	ABCD	
345	998490	Central heating by-pass kit	ABCD	
351	573793	Intake (pressure - control valve)	EFGH	
371	571547	Diaphragm (main flow switch)		
372	571772	Magnet (main flow switch)		
373	571771	Spring (main flow switch)		
374	571770	Main flow switch top cap		
375	998172	Main flow switch reed system		
381	569281	Burner jet 1.25mm full kit (NG)		12
382	569282	Burner jet 0.72 full kit (LPG)		12

NOTE	DESCRIPTION
11	Not supplied as a spare part
12	Not illustrated