



SPARE PARTS EXPLODED VIEW
GAS WALL BOILERS

Models

GENUS 23 MI

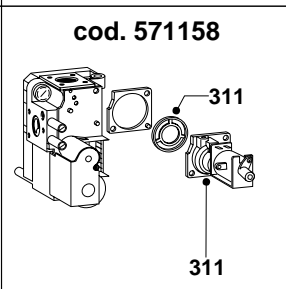
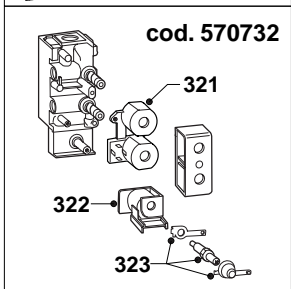
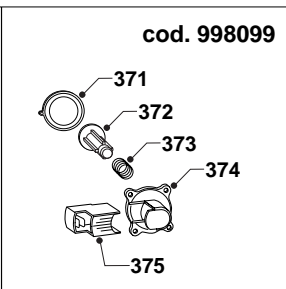
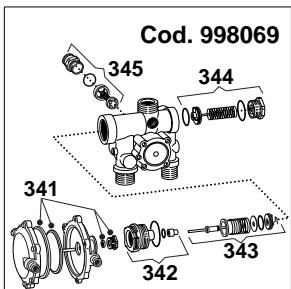
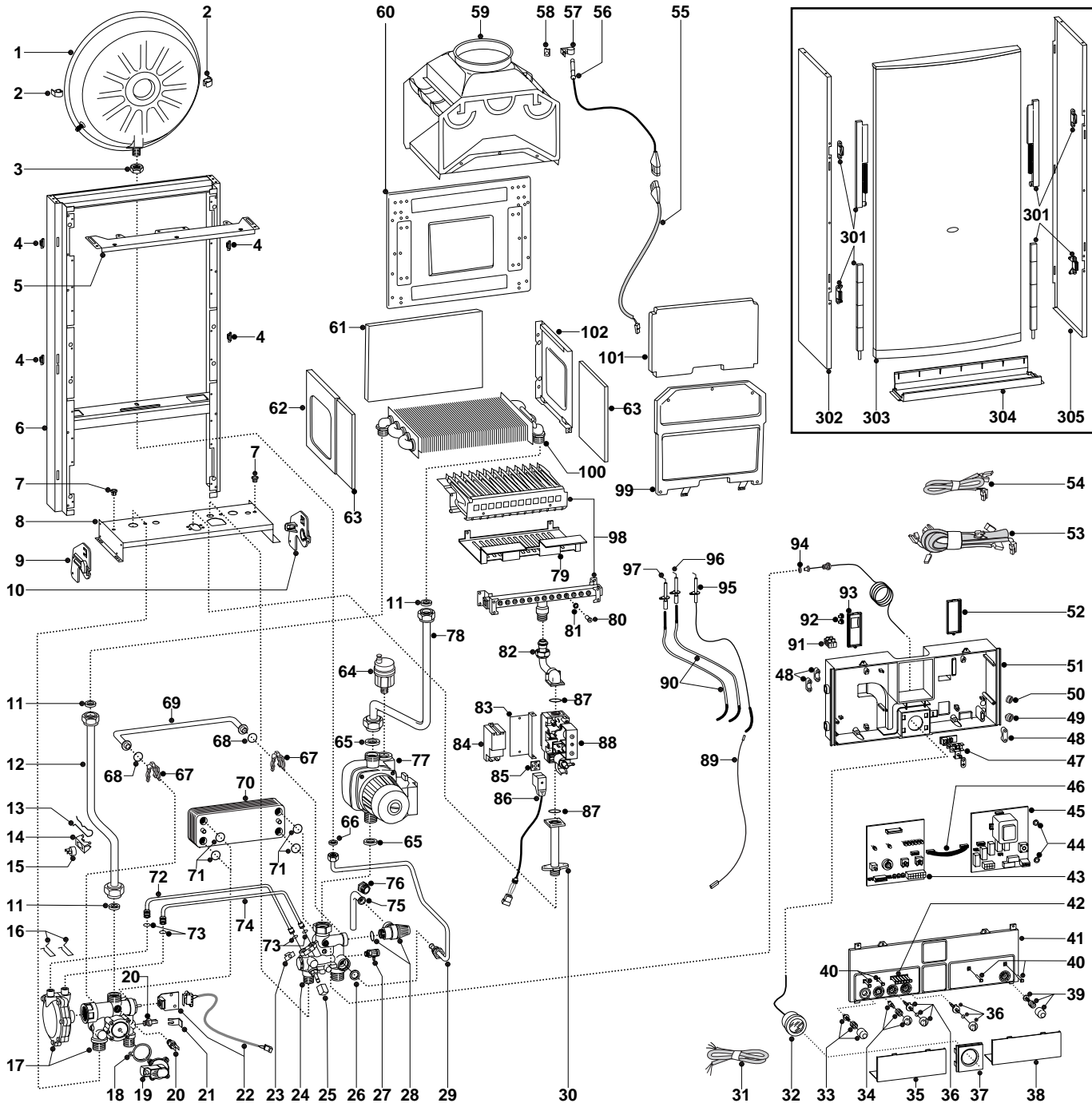
GENUS 27 MI

GENUS 23 RI

GENUS 27 RI

Edition 2 of 15 March 2000





MODELS	CHARACTERISTICS	SERIAL NO: VALIDITY	REF.
GENUS 23 MI	METHANE	0003800531	A
GENUS 23 MI	LPG	0003800532	B
GENUS 27 MI	METHANE	0003800533	C
GENUS 27 MI	LPG	0003800534	D
GENUS 23 RI	METHANE	0003800535	E
GENUS 23 RI	LPG	0003800536	F
GENUS 27 RI	METHANE	0003800537	G
GENUS 27 RI	LPG	0003800538	H

PART.	CODE	DESCRIPTION	REF.	NOTE
1	573294	Expansion vessel		
2	999228	Expansion vessel insert		
3	573244	3/8" lock nut		
4	574302	Casing support bracket (Plastic)		
5	572984	Casing support bracket		
6	-----	Frame		11
7	570772	Cable holder		
8	-----	Hydraulic support		11
9	998042	Hydraulic support bracket (L/H)		
10	998041	R.H. hydraulic support bracket		
11	573520	Gasket 3/4"		
12	997201	Pipe (main exchanger - 3 way group)	ABEF	
12	998092	Main exchanger/3-way-group pipe	CDGH	
13	998043	Fixing spring (Thermostat)		
14	997224	Fixing spring (overheat thermostat)		
15	997206	Thermostat (overheat)		
16	573809	Spring (water venturi)	ABCD	
17	573293	Flow group	EFGH	
17	998069	3-way pressure gauge valve group	ABCD	
18	571547	Diaphragm (main flow switch)		
19	998099	Main circuit flow switch		
20	569236	Temperature probe (C.H.W.)		
21	573824	Bracket (M/Flow Micro Switch)		
22	998921	Microswitch	ABCD	
23	571838	Pipe fixing clip	ABCD	
24	573318	Return group	EFGH	
24	998071	Return group	ABCD	
25	571559	Filling cock knob		
26	573528	Gasket 1/2"		
27	573727	Manual vent cock		
28	573172	Safety valve (1/2" 3 bar)		
29	573311	Pipe (expansion vessel)		
30	997202	Gas inlet pipe		
31	998012	Cable (power supply)		
32	571649	Pressure gauge		
33	573300	Release push button kit		
34	573302	Summer/Winter selector kit		
35	571629	L.H. inspection cover		
36	573301	Regulation knob kit		
36	573328	Front panel cover	EFGH	
37	572948	Cover (Pressure Gauge)		
38	571628	Inspection Cover (R.H).		
39	573303	On/fff push button kit		
40	571550	Power Indicator L.E.D. lens		
41	998528	Control panel cover	EFGH	
41	998816	Control panel cover	ABCD	
42	571551	Temperature L.E.D. lens bank		
43	953033	E C-MI/FFI P.C.B.		
44	569711	Nylon bush (10mm)		
45	952961	Printed circuit board (EI A-M)		
46	952610	Cable (P.C.B.)		
47	-----	Terminal board		11
48	571562	Cable clamp		
49	569458	Cable holders silicone D.2		
50	573534	Cable holder D.75		
51	-----	Control panel		11
52	569713	Cable holder cover (R.H.)		
53	997724	High voltage wiring	ABCD	
53	997819	High voltage wiring	EFGH	
54	998047	Low voltage wiring	EFGH	
54	998055	Low voltage wiring	ABCD	
55	573186	Cable (flue control probe)		
56	573016	Flue control probe		
57	573349	Spring (Flue Control Probe)		
58	570717	Spring (fastening)		

PART.	CODE	DESCRIPTION	REF.	NOTE
59	573983	Flue hood	ABEF	
59	573984	Flue hood	CDGH	
60	-----	Combustion chamber back panel		11
61	998130	Back insulation panel	CDGH	
61	998132	Back insulation panel	ABEF	
62	573243	Combustion panel (L.H.)		
63	998128	Side insulation panel		
64	564254	Auto air vent		
65	569387	Gasket 1"		
66	573521	Gasket 3/8"		
67	573808	Spring (by-pass pipe)	EFGH	
67	998064	Spring (by-pass pipe)	ABCD	
68	571449	O-ring	EFGH	
68	998077	O-ring gasket	ABCD	
69	573219	By-pass pipe	EFGH	
69	998065	By-pass pipe	ABCD	
70	571646	Secondary exchanger (p-type 23kW)	AB	
70	573295	Secondary exchanger (p-type 27kW)	CD	
71	573825	O-Ring (secondary exchanger)	ABCD	
72	573086	Pipe (main flow swtich - positive signal)	ABCD	
73	571807	O-Ring (20-18)	ABCD	
74	573087	Pipe (main flow swtich - negative signal)	ABCD	
75	573176	Pipe (safety valve outlet)		
76	998567	Safety valve outlet pipe ring nut		
77	570487	Oversize circulator with deaerator	CDGH	
77	997008	Standard circulator with deaerator	ABEF	
78	572908	Pipe (main exchanger - pump)	ABEF	
78	572910	Pipe (main exchanger - pump)	CDGH	
79	999113	Protection screen		
80	570248	Burner jet (NG 1.25)	ACEG	
80	570251	Burner jet (LPG 0.72)	BDFH	
81	572138	Burner jet washer		
82	573289	Pipe (gas valve/burner)		
83	573285	Spark Generator Support	ABCD	
83	998436	Igniter support	EFGH	
84	573023	Spark generator		
85	573022	Clamp	ABCD	
86	997661	Gas valve cable	EFGH	
86	999247	Gas valve cable	ABCD	
87	571965	O-Ring (13)		
88	570732	Gas valve (sit tandem)	ABCD	
88	571158	Gas valve (VK - without pilot burner outlet)	EFGH	
89	571657	Cable (detection electrode/P.C.B.)		
90	571662	Cable (ignition electrode)		
91	571787	Terminal board (two pole)		
92	569720	Blind grommet		
93	569714	Cable holder cover (L.H.)		
94	569390	Gasket 1/4"		
95	573441	Electrode (Detection)		
96	569560	Electrode (Ignition R.H.)		
97	569561	Electrode (Ignition L.H.)		
98	572271	Burner 13 ramp (natural gas)	AE	
98	572277	Burner 13 ramp (LPG)	BF	
98	572343	Burner 15 ramp (natural gas)	CG	
98	572372	Burner 15 ramp (LPG)	DH	
99	572647	Combustion chamber panel (front)	ABEF	
99	572648	Combustion chamber panel (front)	CDGH	
100	998138	Main exchanger	ABEF	
100	998139	Main exchanger	CDGH	
101	998129	Front insulation panel	CDGH	
101	998131	Front insulation panel	ABEF	
102	573242	Combustion panel (R.H.)		
301	571993	Front panel runner kit		
302	573014	Case panel (L.H. side)		

PART.	CODE	DESCRIPTION	REF.	NOTE
303	997225	Case panel (front)		
304	997818	Case door insert		
305	573013	Case panel (R.H. side)		
311	571479	Modureg coil (H/Well 24V gas valve)	EFGH	
321	570712	Operator coils (Sit Tandem)	ABCD	
322	573740	Modureg coil (SIT 24V gas valve)	ABCD	
323	573745	Gas modulator cartridge	ABCD	
341	571446	D.H.W. diaphragm valve	ABCD	
342	998013	Heating actuator bush	ABCD	
343	571447	3-Way spring kit	ABCD	
344	571442	D.H.W. pressure switch kit	ABCD	
345	998490	Central heating by-pass kit	ABCD	
371	571547	Diaphragm (main flow switch)		
372	571772	Magnet (main flow switch)		
373	571771	Spring (main flow switch)		
374	571770	Main flow switch top cap		
375	998172	Main flow switch reed system		
381	569281	Burner jet 1.25mm full kit (NG)		12
382	569282	Burner jet 0.72 full kit (LPG)		12

NOTE	DESCRIPTION
11	Not supplied as a spare part
12	Not illustrated