



SPARE PARTS EXPLODED VIEW
GAS WALL BOILERS

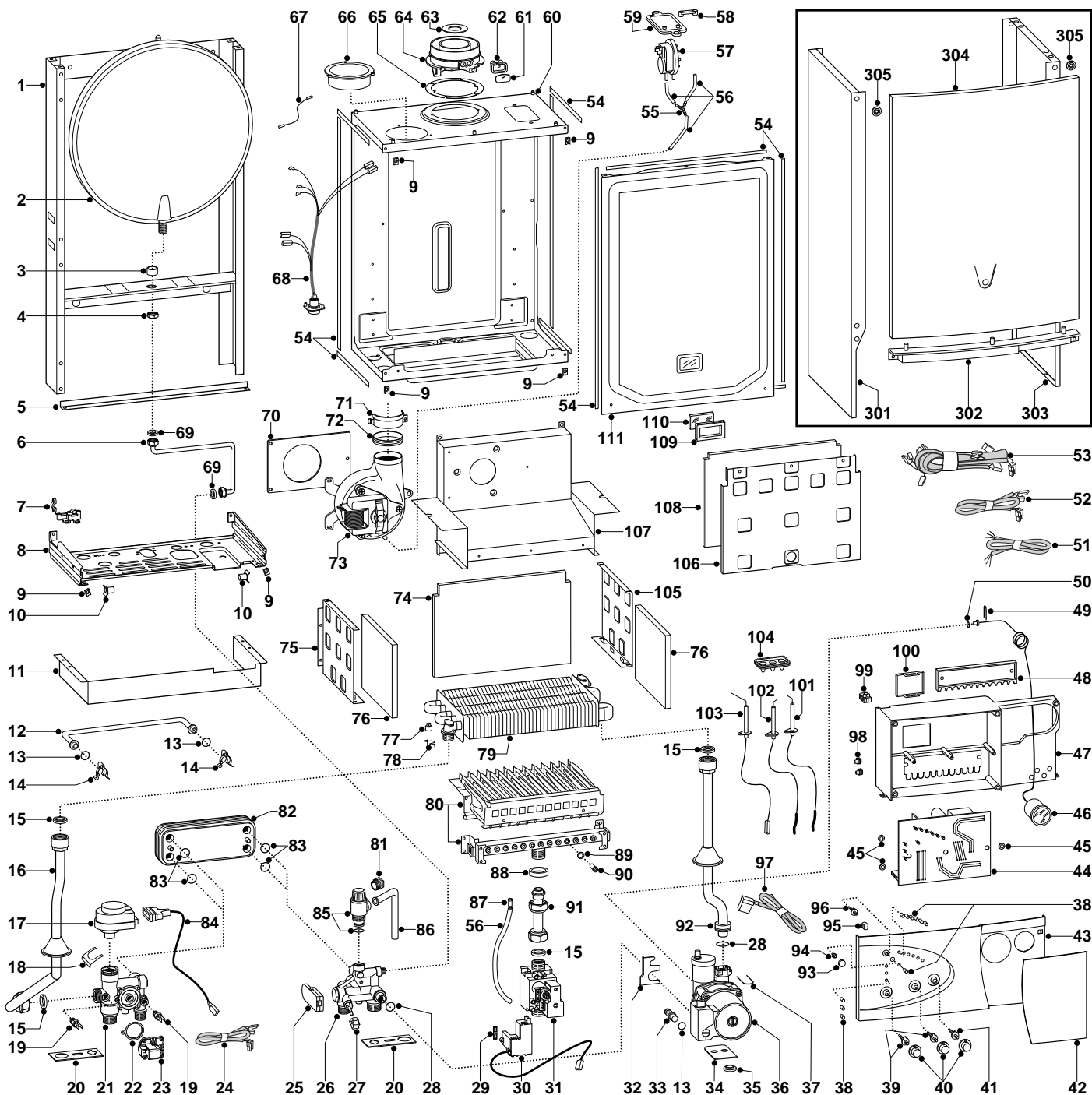
Model

MICROGENUS 23 MFFI

MICROGENUS 27 MFFI

Edition 1 of 16 December 2002





ER2.0022.10033001001

MODEL	CHARACTERISTICS	SERIAL NO. VALIDITY	REF.
MICROGENUS 23 MFFI	METHANE	2320230100001	A
MICROGENUS 27 MFFI	METHANE	2320230100001	B

PART.	CODE	DESCRIPTION	REF.	NOTE
1	-----	Frame		11
2	998616	Expansion vessel		
3	998776	Bush		
4	998581	3/8" lock nut		
5	990492	Frame support		
6	999102	Pipe (expansion vessel)		
7	998580	Cable holder		
8	-----	Hydraulic group support		11
9	570717	Spring (fastening) (5 pcs)		
10	995492	Pivot		
11	995333	Grankase (connectors cover white)		
12	998589	By-pass pipe		
13	998077	O-ring gasket (20 pcs)		
14	998064	Spring (by-pass pipe) (10 pcs)		
15	573520	Gasket 3/4" (25 pcs)		
16	999978	Pipe (C.H. flow)		
17	997147	Motor (3-Way valve)		
18	997077	Fixing clip (motor)		
19	998458	Temperature probe		
20	999601	Gasket (anti-vibration)		
21	998613	Flow group		
22	571547	Diaphragm (main flow switch)		
23	998099	Main circuit flow switch		
24	998632	Cable (temperature probes)		
25	999075	D.H.W. flow switch		
26	999672	Return group (flow gauge)		
27	571559	Filling cock knob		
28	998424	O-ring (C=4 D=17,04) (10 pcs)		
29	574279	Gasket (5 pcs)		
30	999919	Spark generator		
31	997089	Gas valve (SIT 845 SIGMA)		
32	999162	Pump bracket		
33	999598	Pump plug		
34	995364	Spacer plate (pump)		
35	999100	Lock washer (20 pcs)		
36	990854	Pump	B	
36	999591	Pump	A	
37	997153	U-clip (20 pcs)		
38	998570	L.E.D.		
39	998575	Spindle (temperature knob)		
40	998603	Control knob		
41	998572	Spindle (on/off knob)		
42	999059	Front cover		
43	999942	Control panel (front)		
44	996163	Printed circuit board (CMP2 MI/FFI)		
45	569711	Nylon bush (10mm - 20 pcs)		
46	999245	Pressure gauge		
47	-----	Control panel		11
48	998953	Cable holder cover		
49	571548	U-Clip		
50	998517	Gasket (20 pcs)		
51	995979	Cable (power supply)		
52	998863	Low voltage wiring		
53	995317	High voltage wiring		
54	998516	Gasket (adhesive 10x6 - 5 pcs)		
55	573327	"Y" piece (air pressure)		
56	573576	Compensation tube		
57	571651	Air pressure switch	B	
57	998484	Air pressure switch	A	
58	573329	Pressure intake cover		
59	997203	Support plate (air pressure switch)		
60	-----	Sealed chamber		11
61	998565	Cover (flue test point)		
62	998636	Gasket (flue test point - 5 pcs)		
63	999980	Restrictor (flue - exhaust manifold/header)	A	
63	995315	Restrictor (flue - exhaust manifold/header d.41)	B	

PART.	CODE	DESCRIPTION	REF.	NOTE
64	999561	Flue (exhaust manifold/header)		
65	998637	Gasket (flue collar - 5 pcs)		
66	998595	Plug (air intake)		
67	999925	Earth cable (sealed chamber)		
68	995316	Cable (fan/air pressure switch)		
69	573521	Gasket 3/8" (25 pcs)		
70	999135	Panel (insulation - fan)		
71	998566	Fixing clamp (fan)		
72	995349	Gasket (fan) (5 pcs)		
73	999397	Fan	A	
73	998894	Fan	B	
74	998640	Panel (insulation - rear)	A	
74	999554	Panel (insulation - rear)	B	
75	995893	Panel (combustion chamber - L.H. side)	A	
75	995922	Panel (combustion chamber - L.H. side)	B	
76	998639	Panel (insulation - side)		
77	996065	Thermostat (overheat- 103°C)		
78	998583	Fixing spring (overheat thermostat)		
79	998620	Main exchanger	A	
79	998893	Main exchanger	B	
80	996158	Burner 12 ramp (N.G.)	A	
80	998887	Burner 14 ramp (N.G.)	B	
81	998567	Nut (pipe - safety valve)		
82	571646	Secondary exchanger (p-type 23kW)	A	
82	573295	Secondary exchanger (p-type 27kW)	B	
83	573825	O-Ring (secondary exchanger - 10 pcs)		
84	996336	Diverter valve (DHW)		
85	573172	Safety valve (1/2" 3 bar)		
86	573176	Pipe (safety valve outlet)		
87	573325	Rivet (20 pcs)		
88	569443	Silicone seal		
89	572138	Burner jet washer (20 pcs)		
90	998433	Burner jet (N.G. 1.30) (10 pcs)		
91	998729	Pipe (gas valve)		
92	998732	Pipe (C.H. return)		
93	998604	Reset button		
94	998571	Reset button (insert)		
95	999148	Selector button (comfort)		
96	998579	Spindle (comfort)		
97	999968	Cable (P.C.B. - pump)		
98	569720	Blind grommet		
99	571787	Terminal board (two pole)		
100	997745	Timer opening cover		
101	998623	Electrode (Ignition R.H.)		
102	998622	Electrode (Ignition L.H.)		
103	998624	Electrode (Detection)		
104	998147	Ignition electrode cable rubber		
105	995892	Panel (combustion chamber - R.H. side)	A	
105	995923	Panel (combustion chamber - R.H. side)	B	
106	995921	Panel (combustion chamber - front)	B	
106	996134	Panel (combustion chamber - front)	A	
107	998925	Flue hood	B	
107	999385	Flue hood	A	
108	995995	Panel (insulation - front)	A	
108	995996	Panel (insulation - front)	B	
109	998076	Gasket (sight glass)		
110	998075	Sight glass		
111	999151	Panel (combustion chamber - front)		
301	998477	Case panel (L.H. side)		
302	991944	Front template		
303	998476	Case panel (R.H. side)		
304	998607	Panel (front case)		
305	995305	Washer (20 pcs)		
311	998716	Burner jet (full kit - N.G.) (15 pcs)		12

PART.	CODE	DESCRIPTION	REF.	NOTE
312	998717	Burner jet (full kit - L.P.G.) (15 pcs)		12

NOTE	DESCRIPTION
11	Not supplied as a spare part
12	Not illustrated