



SPARE PARTS EXPLODED VIEW
GAS WALL BOILERS

Models

MICROSYSTEM 10 RI

MICROSYSTEM 15 RI

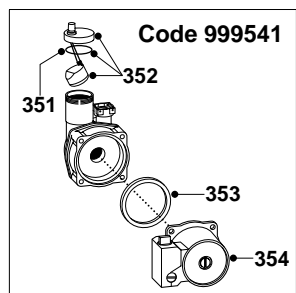
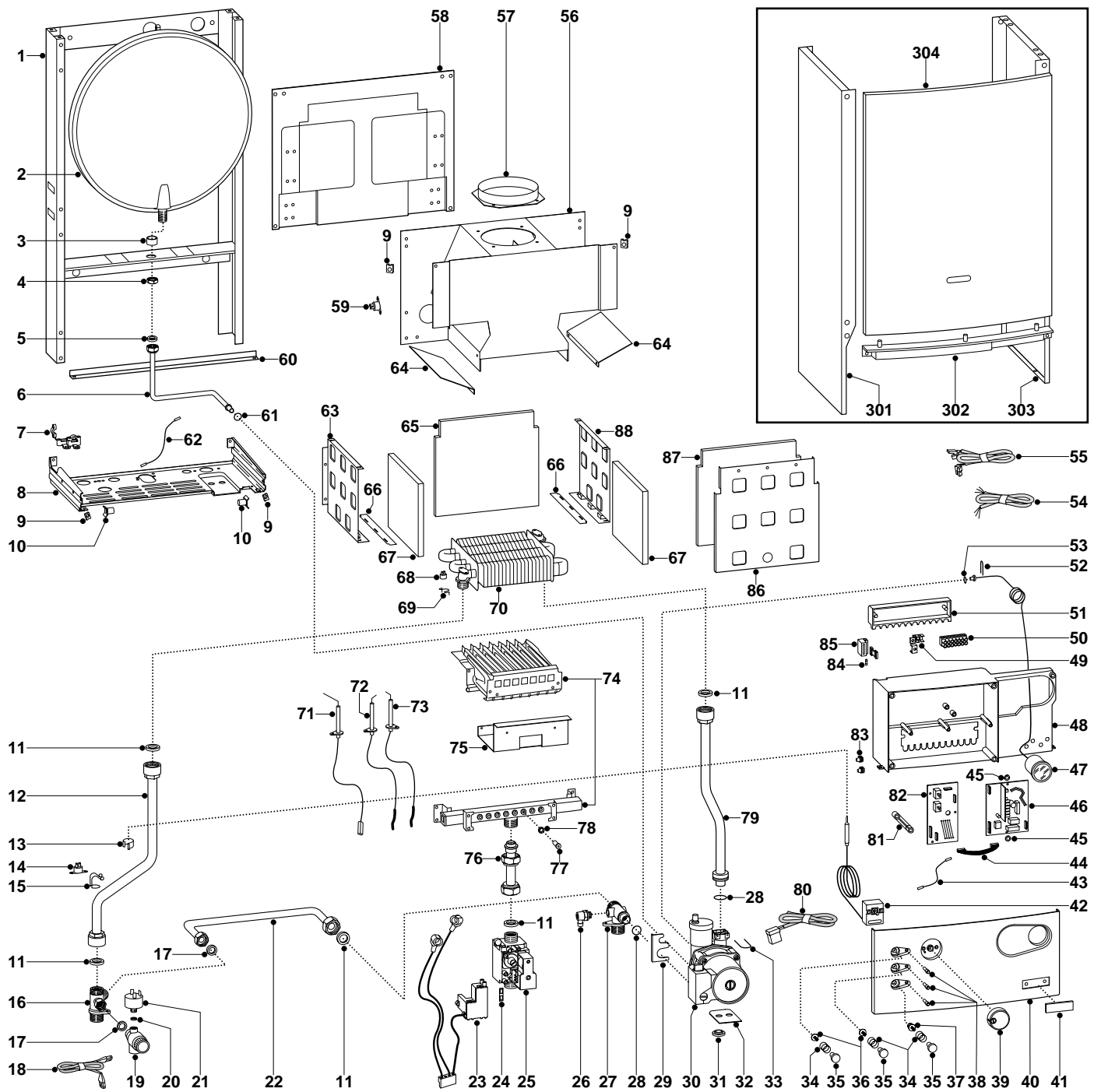
Edition 1 of 1 September 2000

Revision 3 of 7 Aout 2001



Replaces Edition 1 - Revision 2

ER2001210022001031



Code 999541

ER2001210022001031

MODELS	CHARACTERISTICS	SERIAL NO: VALIDITY	REF.
MICROSYSTEM 10 RI	METHANE	2320021100001	A
MICROSYSTEM 10 RI	LPG	2320021100001	B
MICROSYSTEM 15 RI	METHANE	2320021100001	C
MICROSYSTEM 15 RI	LPG	2320021100001	D

PART.	CODE	DESCRIPTION	REF.	NOTE
1	-----	Boiler frame		11
2	998616	Expansion vessel		
3	998776	Bush		
4	998581	3/8" lock nut		
5	573521	Gasket 3/8"		
6	999525	Pipe (expansion vessel)		
7	998580	Cable holder		
8	-----	Hydraulic group support		11
9	570717	Spring (fastening)		
10	995492	Pivot		28
11	573520	Gasket 3/4"		
12	999526	Flow pipe		
13	571565	Fixing spring (pressure gauge)		
14	570760	Thermostat (anti-frost)		
15	999557	Fixing spring (anti-frost thermostat)		
16	998612	Flow group		
17	573528	Gasket 1/2"		
18	995407	Cable (low water pressure switch)		25
19	998447	Safety valve (1/4" 3 Bar)		
20	569390	Gasket 1/4"		
21	995903	Low water pressure switch		29
22	999923	By-pass pipe		21
24	574279	Gasket		
25	999474	Gas valve		
26	998809	Auto air vent		
27	999476	Return group		
28	998424	O-ring		
29	999162	Pump bracket		
30	999541	Pump (THULD 4.32 H9)		
31	999100	Lock washer		
32	995364	Spacer plate (pump)		26
33	997153	U-clip		
34	999603	Spring (push button)		
35	999469	Push button		
36	999442	Spindle (push button)		
37	999444	Reset button insert		
38	997714	L.E.D. (power indicator)		
39	999456	Control knob		
40	999459	Control panel (front)		
41	997824	Name badge (plastic)		
42	999578	Thermostat (regulation)		
43	995323	Cable (P.C.B.-terminal board)		22
44	995324	Cable (P.C.B.)		23
45	569711	Nylon bush (10mm)		
46	999498	Printed circuit board (CBM2 AT-MI2X)		
47	999245	Pressure gauge		
48	-----	Control panel		11
49	-----	Terminal board		11
50	-----	Seven pole terminal board		11
51	-----	Control panel cover (rear)		11
52	571548	Clip (main flow switch)		
53	998517	Gasket		
54	995325	Cable (power supply)		24
55	995905	Cable (thermostat)		31
56	999465	Flue hood		
57	999454	Flue exhaust manifold / header		
58	-----	Panel (combustion chamber rear)		11
59	999539	75-65°C fume thermostat	CD	
59	999576	65-55°C fume thermostat	AB	
60	995393	Frame support		27
61	997182	Gasket		
62	999547	Earth cable (P.C.B.)		
63	998600	Panel (combustion chamber - L/H side)		
64	999587	Internal baffle		

ER2001210022001031

PART.	CODE	DESCRIPTION	REF.	NOTE
65	999441	Panel (insulation - rear)		
66	999464	Panel (combustion chamber - lower)	AB	
67	998639	Panel (insulation - side)		
68	999538	Overheat thermostat		
69	998583	Fixing spring (overheat thermostat)		
70	999486	Main exchanger		
71	998624	Detection electrode		
72	998622	Electrode (Ignition L.H.)		
73	998623	Electrode (Ignition R.H.)		
74	999479	Burner 8 ramp (N.G.)	C	
74	999481	Burner 6 ramp (N.G.)	A	
74	999685	Burner 8 ramp (L.P.G.)	D	
74	999686	Bruner 6 ramp (L.P.G.)	B	
75	999681	Protection screen		
76	998729	Pipe (gas valve)		
77	998433	Burner jet (N.G. 1.30)		AC
77	998434	Burner jet (L.P.G. 0.77)		BD
78	572138	Burner jet washer		
79	999527	Return pipe		
80	995906	Cable (pump)		32
81	999458	Lever (P.C.B.)		
82	999501	Printed circuit board (CT1)		
83	569720	Blind grommet		
84	950030	Fast fuse 2AT		
85	572860	Terminal board (one-pole) + fuse-holder		
86	999460	Panel (combustion chamber - front)		
87	999440	Panel (insulation - front)		
88	998599	Panel (combustion chamber - R.H.side)		
301	998695	Case panel (L.H. side)		
302	998596	Insert case		
303	998694	Case panel (R.H. side)		
304	998509	Panel (front case)		
351	998644	O-ring (A.A.V.)		
352	998643	Auto Air Vent		
353	998738	Gasket (pump head)		
354	999111	Pump head (noiseless)		
361	998716	Burner jet (full kit - N.G.)		12
362	998717	Burner jet (full kit - L.P.G.)		12

NOTE	DESCRIPTION
11	Not supplied as a spare part
12	Not illustrated
21	Replaces code 998590 - from serial number: 2320101600001 - production improvement
22	Replaces code 999544 - from serial number: 2320101600001 - production improvement
23	Replaces code 999546 - from serial number: 2320101600001 - production improvement
24	Replaces code 999549 - from serial number: 2320101600001 - production improvement
25	Replaces code 999552 - from serial number: 2320106400001 - production improvement
26	Replaces code 999602 - from serial number: 2320103200001 - production improvement
27	Replaces code 999594 - from serial number: 2320107400001 - production improvement
28	Replaces code 998569 - from serial number: 2320118000001 - production improvement
29	Replaces code 998627 - from serial number: 2320118000001 - production improvement
31	Replaces code 999551 - from serial number: 2320118000001 - production improvement
32	Replaces code 999580 - from serial number: 2320118000001 - production improvement