



SPARE PARTS EXPLODED VIEW  
GAS WALL BOILER

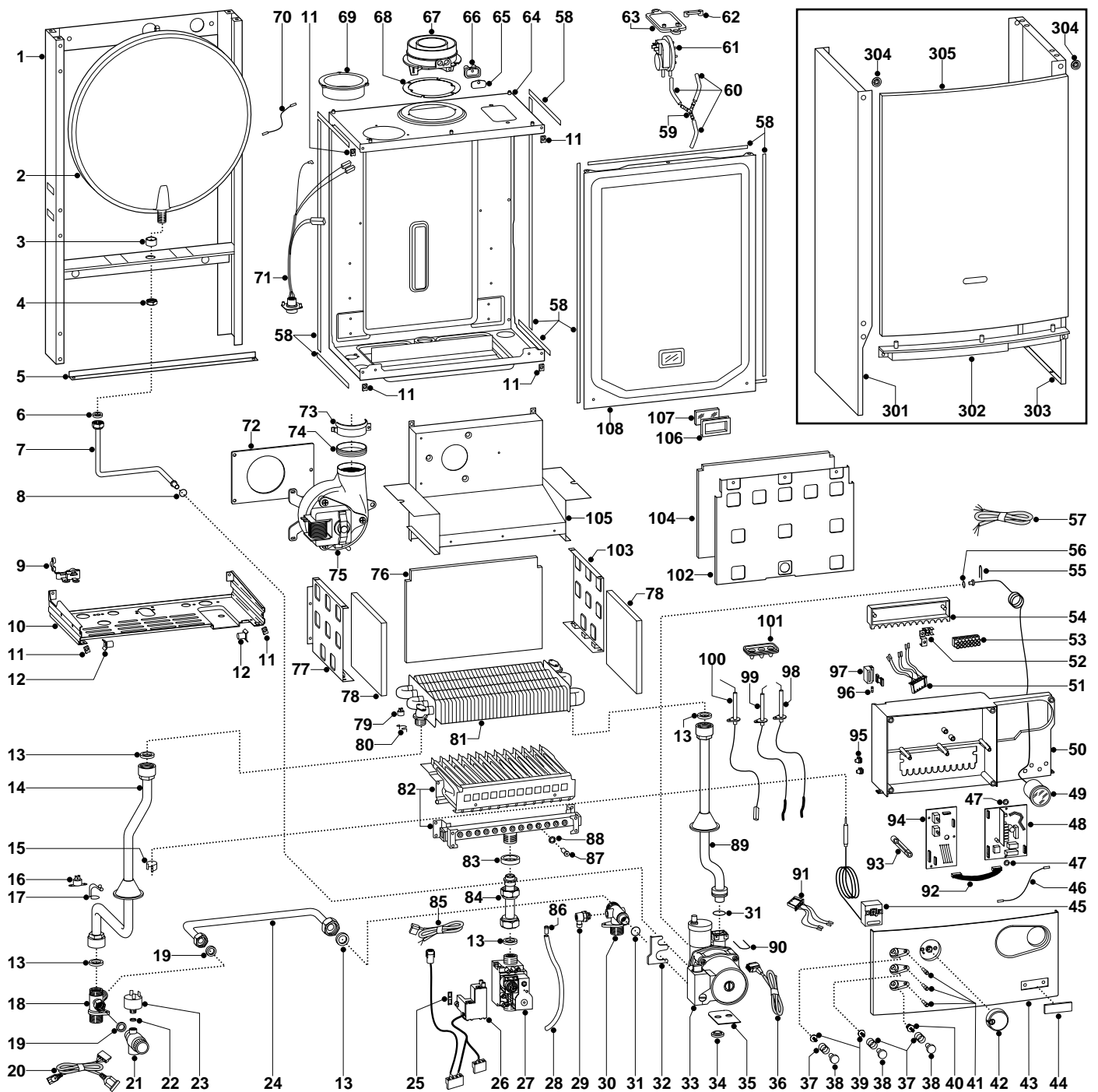
Model

**MICROSYSTEM 21 RFFI**

---

Edition 1 of 15 October 2001





ER20012100252010001

MODEL	CHARACTERISTICS	SERIAL NO: VALIDITY	REF.
MICROSYSTEM 21 RFFI	METHANE	2320121000001	A
MICROSYSTEM 21 RFFI	LPG	2320121000001	B

PART.	CODE	DESCRIPTION	REF.	NOTE
1	-----	Frame		11
2	998616	Expansion vessel		
3	998776	Bush		
4	998581	3/8" lock nut		
5	995393	Frame support		
6	573521	Gasket 3/8"		
7	999525	Pipe (expansion vessel)		
8	998077	O-ring gasket		
9	998580	Cable holder		
10	-----	Hydraulic group support		11
11	570717	Spring (fastening)		
12	995492	Pivot		
13	573520	Gasket 3/4"		
14	999530	Pipe (C.H. flow)		
15	571565	Fixing spring (pressure gauge)		
16	570760	Thermostat (anti-frost)		
17	999557	Fixing spring (anti-frost thermostat)		
18	998612	Flow group		
19	573528	Gasket 1/2"		
20	995407	Cable (low water pressure switch)		
21	998447	Safety valve (1/4" 3 Bar)		
22	569390	Gasket 1/4"		
23	995903	Low water pressure switch		
24	999923	By-pass pipe		
25	574279	Gasket		
26	999987	Spark generator		
27	999475	Gas valve		
28	573576	Compensation tube		
29	998809	Auto air vent		
30	999476	Return group		
31	998424	O-ring		
32	999162	Pump bracket		
33	999541	Pump (THULD 4.32 H9)		
34	999100	Lock washer		
35	995364	Spacer plate (pump)		
36	995906	Cable (pump)		
37	999603	Spring (push button)		
38	999469	Push button		
39	999442	Spindle (push button)		
40	999444	Reset button insert		
41	997714	L.E.D. (power indicator)		
42	999456	Control knob		
43	999459	Control panel (front)		
44	997824	Name badge (plastic)		
45	999577	Thermostat (regulation)		
46	999547	Earth cable (P.C.B.)		
47	569711	Nylon bush (10mm)		
48	999499	Printed circuit board (CBM2 AT-FFI2X)		
49	999245	Pressure gauge		
50	-----	Control panel		11
51	995323	Cable (P.C.B.-terminal board)		
52	-----	Terminal board		11
53	995473	Terminal board (PA35/7)		
54	-----	Cover (control panel - rear)		11
55	571548	Clip (main flow switch)		
56	998517	Gasket		
57	995325	Cable (power supply)		
58	998516	Gasket (adhesive 10x6)		
59	573327	"Y" piece (air pressure)		
60	571575	Silicone pipe (positive signal)		
61	995291	Air pressure switch		
62	573329	Pressure intake cover		
63	997203	Support plate (air pressure switch)		
64	-----	Sealed chamber		11
65	998565	Cover (flue test point)		

ER2001210025201001

PART.	CODE	DESCRIPTION	REF.	NOTE
66	998636	Gasket (flue test point)		
67	999561	Flue (exhaust manifold/header)		
68	998637	Gasket (flue collar)		
69	998595	Plug (air intake)		
70	999925	Earth cable (sealed chamber)		
71	999548	Cable (sealed chamber)		
72	999135	Panel (insulation - fan)		
73	998566	Fixing clamp (fan)		
74	995349	Gasket (fan)		
75	999489	Fan		
76	998640	Panel (insulation - rear)		
77	995893	Panel (combustion chamber - L.H. side)		
78	998639	Panel (insulation - side)		
79	999538	Overheat thermostat		
80	998583	Fixing spring (overheat thermostat)		
81	998620	Main exchanger		
82	995477	Burner 12 ramp (L.P.G.)	B	
82	998618	Burner 12 ramp (natural gas)	A	
83	569443	Silicone seal		
84	998729	Pipe (gas valve)		
85	999988	Cable (gas valve)		
86	573325	Rivet		
87	998433	Burner jet (N.G. 1.30)	A	
87	998434	Burner jet (L.P.G. 0.77)	B	
88	572138	Burner jet washer	A	
89	998732	Pipe (C.H. return)		
90	997153	U-clip		
91	999545	Cable (regulation thermostat)		
92	995324	Cable (P.C.B.)		
93	999458	Lever (P.C.B.)		
94	999501	Printed circuit board (CT1)		
95	569720	Blind grommet		
96	950030	Fast fuse 2AT		
97	572860	Terminal board (one-pole) + fuse-holder		
98	998623	Electrode (Ignition R.H.)		
99	998622	Electrode (Ignition L.H.)		
100	998624	Detection electrode		
101	998147	Ignition electrode cable rubber		
102	995889	Panel (combustion chamber - front)		
103	995892	Panel (combustion chamber - R.H. side)		
104	995995	Panel (insulation - front)		
105	999385	Flue hood		
106	998076	Gasket (sight glass)		
107	998075	Sight glass		
108	999151	Panel (combustion chamber - front)		
301	998477	Case panel (L.H. side)		
302	998596	Insert case		
303	998476	Case panel (R.H. side)		
304	995305	Washer		
305	998442	Case panel (front)		
311	998716	Burner jet (full kit - N.G.)		12
312	998717	Burner jet (full kit - L.P.G.)		12

NOTE	DESCRIPTION
11	Not supplied as a spare part
12	Not illustrated

ER20012.10025201001