

SPARE PARTS EXPLODED VIEW
GAS WALL BOILERS

Models

TX 23 MFFI

TX 27 MFFI

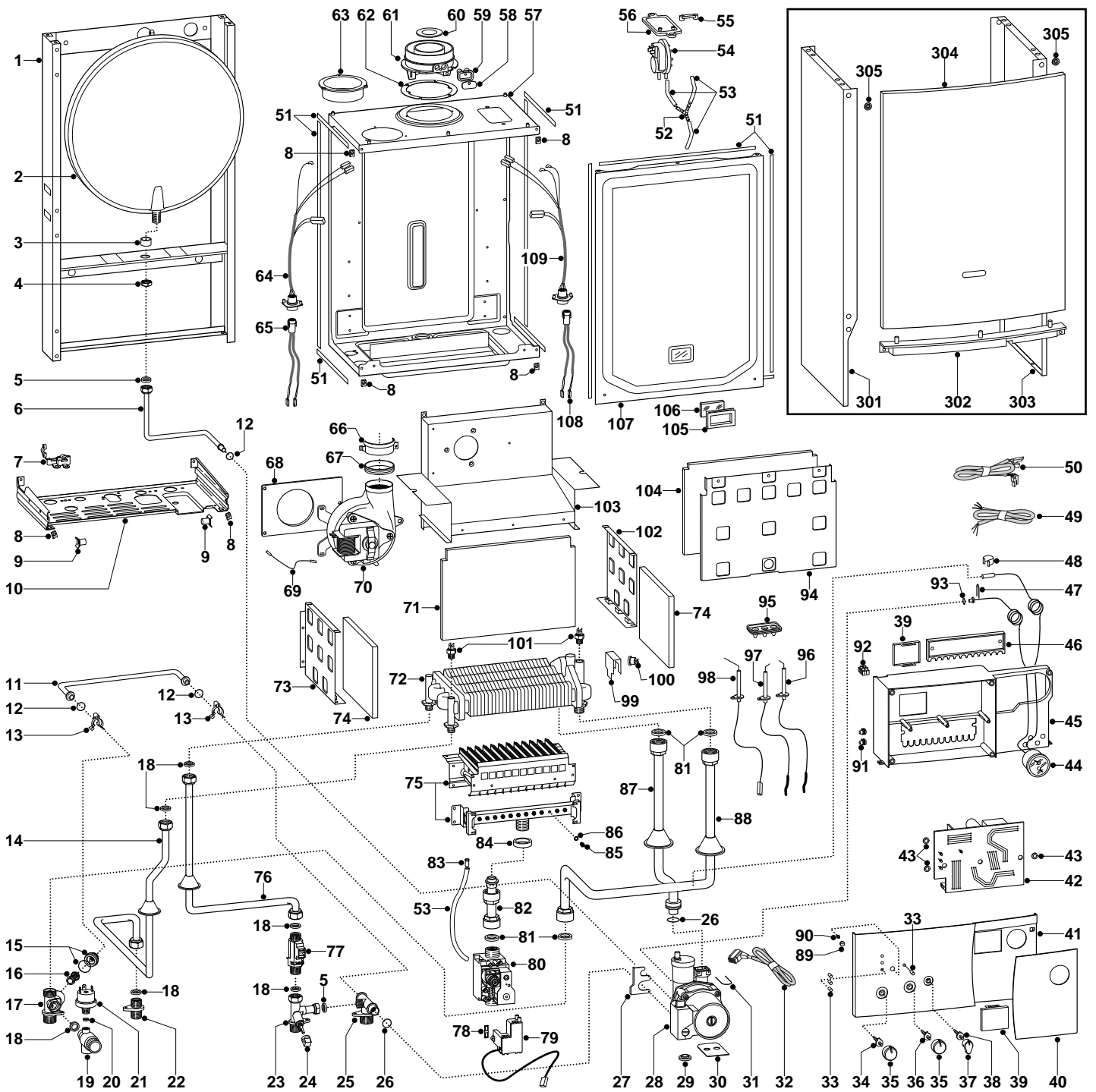
Edition 1 of 1 July 2004

Revision 1 of 31 August 2005



Replaces edition 1

ER2005210046901011



ER2005210046901011

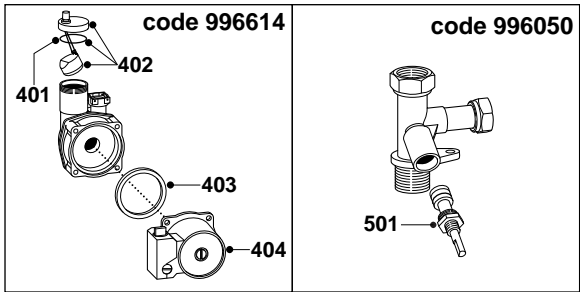
MODEL	CODE	SERIAL NO. VALIDITY	REF.
TX 23 MFFI ARISTON (RO) NG	537824	2320524300000	A
TX 27 MFFI ARISTON (RO) NG	3300012	2320524300000	B

PART.	CODE	DESCRIPTION	REF.	NOTE
1	-----	Frame		11
2	998616	Expansion vessel		
3	998776	Bush (expansion vessel)		
4	998581	3/8" lock nut		
5	573521	Gasket 3/8" (25 pcs)		
6	999525	Pipe (expansion vessel)		
7	998580	Cable holder		
8	570717	Spring (fastening) (5 pcs)		
9	995492	Pivot		
10	-----	Hydraulic group support		11
11	998589	By-pass pipe		
12	998077	O-ring gasket (20 pcs)		
13	998064	Spring (by-pass pipe) (10 pcs)		
14	999104	Pipe (D.H.W. outlet)		
15	65102068	Union by-pass + O-ring		
16	996046	By-pass		
17	996049	Flow group (twin pass)		
18	573528	Gasket 1/2" (25 pcs)		
19	998447	Safety valve (1/4" 3 Bar)		
20	569390	Gasket 1/4" (25 pcs)		
21	995903	Low water pressure switch		
22	998611	Union (hot water outlet)		
23	996050	Tap fitting		
24	571559	Filling cock knob		
25	996048	Return group with tap attachment		
26	998424	O-ring (C=4 D=17,04) (10 pcs)		
27	999162	Pump bracket		
28	996614	Kit for rear pump attachment		
29	999100	Lock washer (20 pcs)		
30	995364	Spacer plate (pump) (20 pcs)		
31	997153	U-clip (20 pcs)		
32	999968	Cable (P.C.B. - pump)		
33	998576	Led (L=10.8)		
34	998578	Spindle (temperature knob)		
35	998933	Control knob		
36	998575	Spindle (temperature knob)		
37	998932	On-Off knob		
38	998574	Spindle (on/off knob)		
39	997745	Cover (potentiometers/P.C.B.)		
40	995373	Front cover door		
41	998927	Front cover		
42	65101374	P.C.B. (TEC2M-HS MI/MFFI)		
43	569711	Nylon bush (10mm - 20 pcs)		
44	999520	Temperature/pressure gauge		
45	-----	Control panel		11
46	999238	Control panel cover		
47	65103198	Clip		
48	571565	Fixing spring (pressure gauge) (10 pcs)		
49	995979	Cable (power supply)		
50	998635	Low voltage wiring		
51	65102772	Gasket (adhesive - 14X6 mm)		
52	573327	"Y" piece (air pressure)		
53	573576	Compensation tube		
54	571651	Air pressure switch	B	
54	998484	Air pressure switch	A	
55	573329	Pressure intake cover		
56	997203	Support plate (air pressure switch)		
57	-----	Sealed chamber		11
58	998565	Cover (flue test point)		
59	998636	Gasket (flue test point - 5 pcs)		
60	998113	Restrictor (flue-exhaust manifold-D. 45)		
60	999980	Restrictor (flue-exhaust manifold-D=43)		
61	999561	Flue (exhaust manifold / header)		
62	998637	Gasket (flue collar - 5 pcs)		
63	998595	Plug (air intake)		
64	995318	Fan cable & sensor		

PART.	CODE	DESCRIPTION	REF.	NOTE
65	995319	Fan cable & sensor		
66	998566	Fixing clamp (fan)		
67	65100707	Gasket (fan) (5 pcs)		
68	999135	Panel (insulation - fan)		
69	65102263	Earth cable (fan)		
70	998894	Fan	B	
70	999397	Fan	A	
71	998640	Panel (insulation - rear)		
72	998619	Exchanger (twin pass)		
73	995893	Panel (combustion chamber - L.H. side)	A	
73	65100298	Panel (combustion chamber - L.H. side)	B	
74	998639	Panel (insulation - side)		
75	996158	Burner 12 ramp (N.G.)	A	
75	995991	Burner 13 ramp (N.G.)	B	
76	996044	Pipe (cold water inlet)		
77	65100296	Flow gauge (bitron - 1/2" M-M)		
78	574279	Gasket (spark generator) (5 pcs)		
79	65100514	Spark generator (kit)		
80	997089	Gas valve (SIT 845 SIGMA)		
81	573520	Gasket 3/4" (25 pcs)		
82	65100432	Pipe (gas inlet)		
83	573325	Rivet (20 pcs)		
84	569443	Silicone seal		
85	998433	Burner jet (NG 1.30) (10 pcs)		
86	572138	Burner jet washer (20 pcs)		
87	998731	Pipe (C.H. return)		
88	998727	Pipe (C.H. flow)		
89	998604	Button (reset)		
90	998573	Reset button (insert)		
91	569720	Blind grommet		
92	571787	Terminal board (two pole)		
93	998517	Gasket (20 pcs)		
94	65100555	Panel (combustion chamber - front)		
95	998147	Ignition electrode cable rubber		
96	65100251	Electrode (Ignition R.H.)		
97	65100250	Electrode (Ignition L.H.)		
98	998624	Electrode (Detection)		
99	998582	Fixing spring (overheat thermostat)		
100	996065	Thermostat (overheat- 103°C)		
101	998458	Temperature probe (D.H.W.)		
102	995892	Panel (combustion chamber - R.H. side)	A	
102	990707	Panel (combustion chamber - R.H. side)	B	
103	65102262	Flue hood		
104	995995	Panel (insulation - front)		
105	998076	Gasket (sight glass)		
106	998075	Sight glass		
107	65101606	Panel (front - sealed chamber)		
108	999929	Cable (P.C.B./air pressure switch)		
109	999425	Wiring (air pressure switch/probe)		
201	999511	10 L flow limiting device		12
202	999512	12 L flow limiting device		12
301	998477	Case panel (L.H. side)	A	
301	65100300	Case panel (L.H. side)	B	
302	991944	Front panel crossbar		
303	998476	Case panel (R.H. side)	A	
303	65100301	Case panel (R.H. side)	B	
304	998442	Case panel (front)		
305	995305	Washer (20 pcs)		
601	998716	N.G. burner jet full kit (15 pcs)		12
602	998717	L.P.G. burner jet full kit (15 pcs)		12

NOTE	DESCRIPTION
11	Not supplied as a spare part
12	Not illustrated

ER2005210046901011



PART.	CODE	DESCRIPTION	REF.	NOTE
401	998644	O-ring (pump) (10 pcs)		
402	998643	Auto Air Vent		
403	998738	Gasket (pump head)		
404	996615	Kit (motor pump)		
501	996071	Tap kit		