



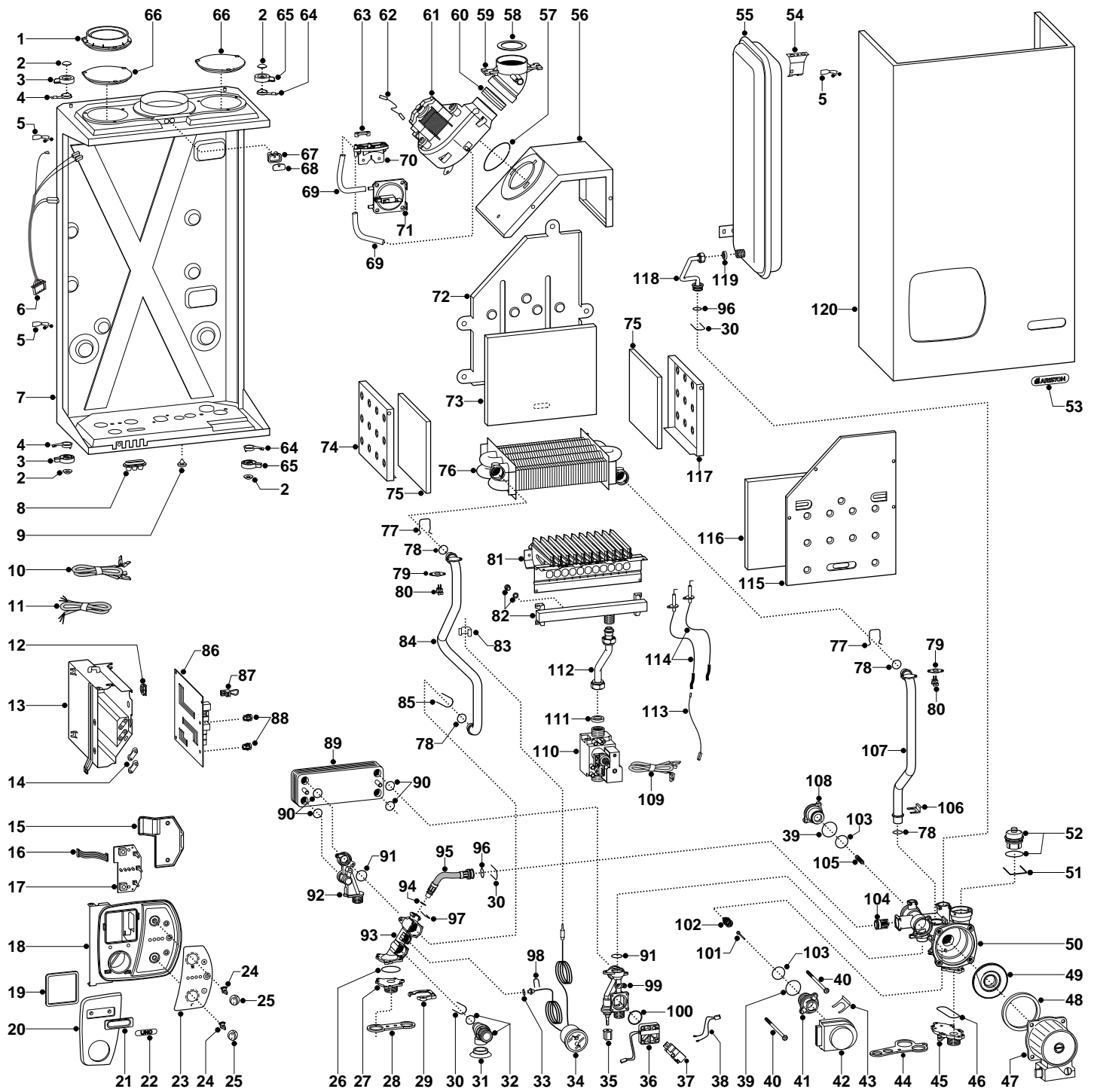
SPARE PARTS EXPLODED VIEW
GAS WALL BOILERS

Model

UNO 24 MFFI

Edition 1 of 1 August 2003





ER2003210038001001

MODEL	CHARACTERISTICS	SERIAL NO. VALIDITY	REF.
UNO 24 MFFI	METHANE	232031500001	A
UNO 24 MFFI	LPG	232031500001	B

PART.	CODE	DESCRIPTION	REF.	NOTE
1	990370	Air return manifold		
2	990351	D=4 cam fixing element		
3	990352	LH closing casing cam		
4	990353	Casing hook		
5	990354	Cable-hitch		
6	991822	Low voltage wiring		
7	-----	Frame		11
8	990355	Cable inlet rubber washer		
9	-----	Rubber		11
10	991828	High voltage wiring		
11	995971	Cable (power supply)		
12	65100754	Cable holder (5 pcs)		
13	991823	P.C.B. holder box		
14	571562	Cable clamp		
15	995920	Control panel cover (rear)		
16	991830	Control module P.C.B. cable		
17	65100750	P.C.B. (UNO-COM)		
18	65100767	Control panel		
19	992196	Gasket (trim)		
20	991826	Trim		
21	-----	Name badge		11
22	-----	"UNO" plate		11
23	65100766	Trim		
24	65100755	Spindle		
25	65100761	Knob		
26	990383	O-ring (C.H. flow manifold - 3143 EPDM)		
27	995936	Flange (C.H. flow)		
28	990360	Gasket (delivery group - 5 pcs)		
29	990404	Lock flange		
30	990385	U-clip		
31	990361	3Bar valve rubber washer		
32	997088	Safety valve (3 bar)		
33	998517	Gasket (20 pcs)		
34	65100757	Pressure/temperature gauge		
35	571559	Filling cock knob		
36	995948	D.H.W. flow switch		
37	995902	Spark generator		
38	995981	Wiring (spark generator)		
39	990488	O-Ring (3118 EPDM) (10 pcs)		
40	990438	Screw (M4X102)(5 pcs)		
41	65100770	ELBI motor support		
42	997147	Motor (3-Way valve)		
43	997077	Fixing clip (motor)		
44	990363	Gasket (return group)		
45	995932	Flange (C.H. return)		
46	990393	O-Ring (3231 EPDM) (10 pcs)		
47	996615	Kit (motor pump)		
48	996123	Pump gasket		
49	-----	Impellor (pump)		11
50	991837	Manifold (C.H. return)		
51	65100421	U-clip		
52	995865	Auto air vent		
53	-----	"ARISTON" plate		11
54	990374	Support bracket (D.H.W. vessel)		
55	995940	Expansion vessel		
56	990367	Flue hood		
57	990368	Seal (silicone - D=5 mm)		
58	998087	Coaxial diaphragm		
59	65100553	Flue (exhaust manifold / header)		
60	573343	Gasket (fan)		
61	995897	Fan		
62	990375	Earth cable (fan)		
63	573329	Pressure intake cover		
64	990371	Casing hook		
65	990372	RH closing casing cam		
66	991821	Air return cover		

PART.	CODE	DESCRIPTION	REF.	NOTE
67	998636	Gasket (flue test point - 5 pcs)		
68	998565	Cover (flue test point)		
69	65100423	Silicone pipe		
70	990373	Support (air pressure switch)		
71	998484	Air pressure switch		
72	-----	Combustion chamber back support		11
73	65100426	Panel (insulation - rear)		
74	990379	Panel (combustion chamber - L.H. side)		
75	995951	Panel (insulation - side)		
76	65100425	Exchanger		
77	990380	Heat exchanger connector fork		
78	997181	O-ring 4067 (5 pcs)		
79	991833	Fixing plate (probe)		
80	990405	Contact NTC probe		
81	995943	Burner (11 ramp)		
82	991907	Gas manifold (with jet - LPG)	B	
82	991908	Gas manifold (with jet - NG)	A	
83	571565	Fixing spring (pressure gauge) (10 pcs)		
84	990434	Pipe (C.H. flow)		
85	997153	U-clip (20 pcs)		
86	65100729	P.C.B. (UNO-MCU MI/FFI)		
87	990381	Connector (room thermostat)		
88	990357	Clips		
89	995945	Secondary exchanger		
90	573825	O-Ring (secondary exchanger - 10 pcs)		
91	990387	O-ring (3081 EPDM) (10 pcs)		
92	995935	LH connector without probe		
93	990384	Manifold (C.H. flow)		
94	998077	O-ring gasket (20 pcs)		
95	990388	By-pass pipe		
96	995976	O-ring (119)		
97	990386	U-Clip		
98	571548	U-Clip		
99	65100756	Manifold (C.W. inlet)		
100	990392	O-ring (134 EPDM)		
101	995910	Spindle (diverter valve)		
102	995930	Diverter valve assembly		
103	990489	O-Ring (3100 EPDM) (10 pcs)		
104	999473	By-pass (Fugas)		
105	990391	Spring (diverter valve)		
106	65100038	Fixing bracket (return pipe)		
107	990485	Pipe (C.H. return)		
108	990390	Plug (diverter valve)		
109	65100758	Low voltage wiring		
110	997089	Gas valve (SIT 845 SIGMA)		
111	573520	Gasket 3/4" (25 pcs)		
112	990389	Pipe (gas valve/burner)		
113	990403	Cable (detection)		
114	990436	Electrode (Ignition/Detection)		
115	990402	Cover (combustion chamber)		
116	995950	Panel (insulation - front/rear)		
117	990400	Panel (combustion chamber - R.H. side)		
118	991829	Pipe (expansion vessel)		
119	573521	Gasket 3/8" (25 pcs)		
120	65100724	Case (complete - assembled)		

NOTE	DESCRIPTION
11	Not supplied as a spare part