



## SPARE PARTS EXPLODED VIEW HYDRAULIC UNITS

### **DELIVERY - RETURN**

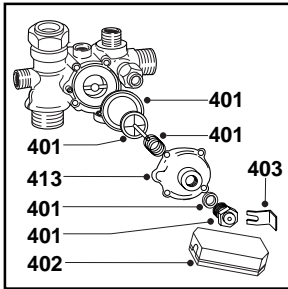
---

Edition 3 of 1 July 2000  
Revision 5 of 1 April 2002

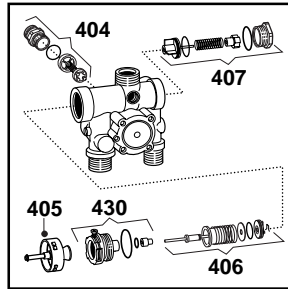


# DELIVERY UNITS

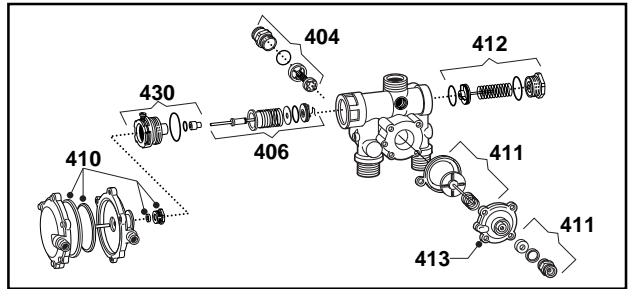
Code 570533



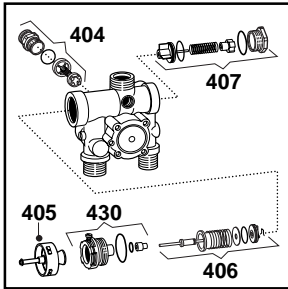
Code 571643



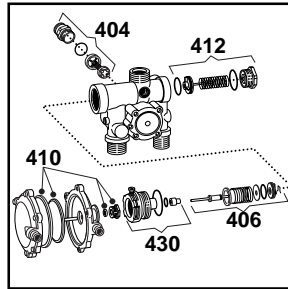
Code 572628



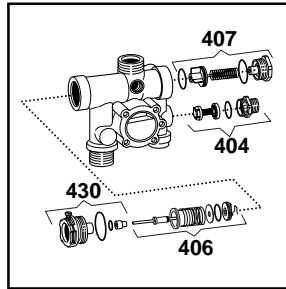
Code 572703



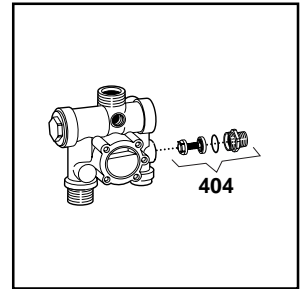
Code 573121



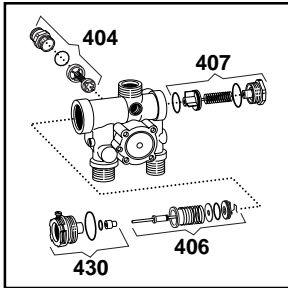
Code 573160



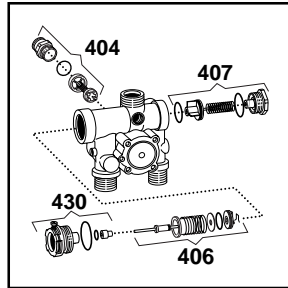
Code 573293



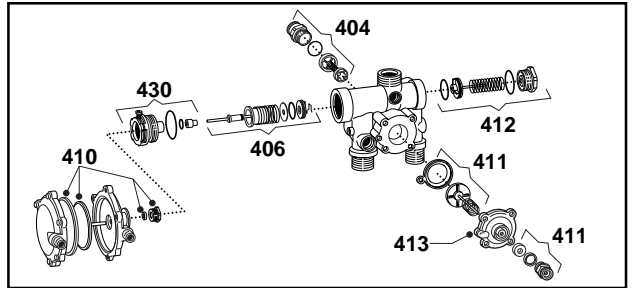
Code 573317



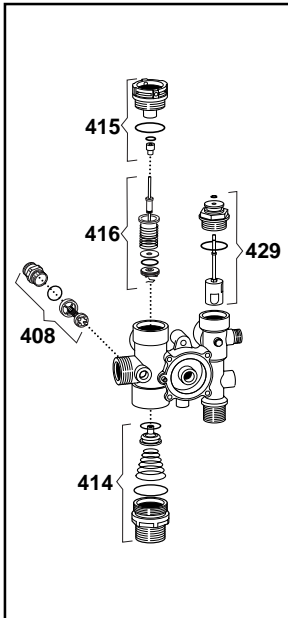
Code 573351



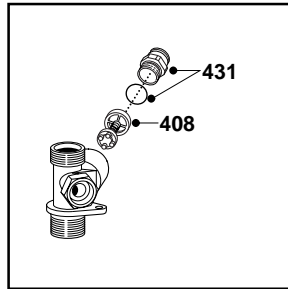
Code 573826



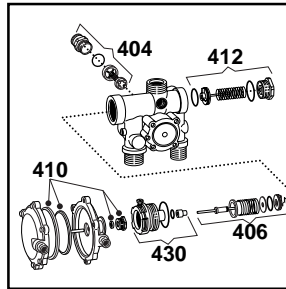
Code 995867



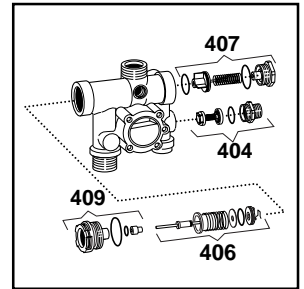
Code 996049



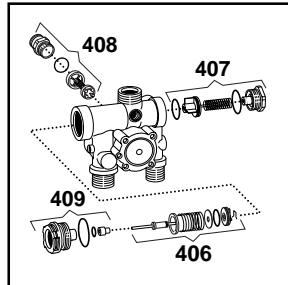
Code 997058



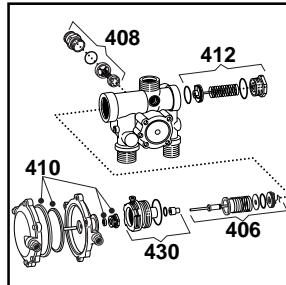
Code 997148



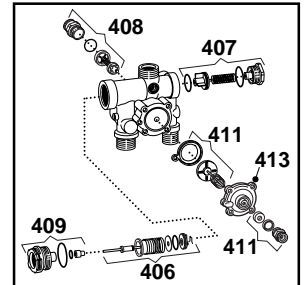
Code 998068



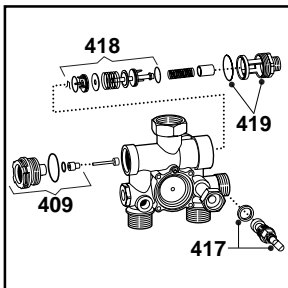
Code 998069



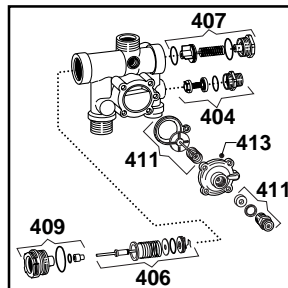
Code 998127



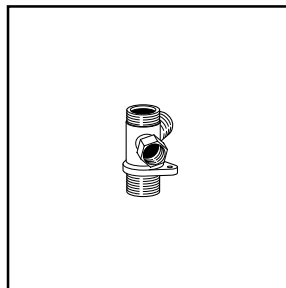
Code 998178



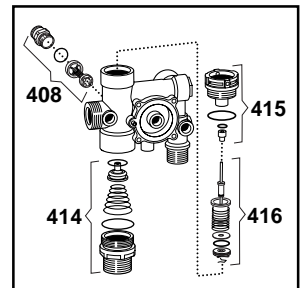
Code 998456



Code 998612



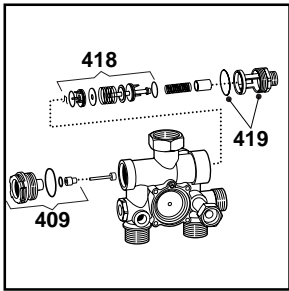
Code 998613



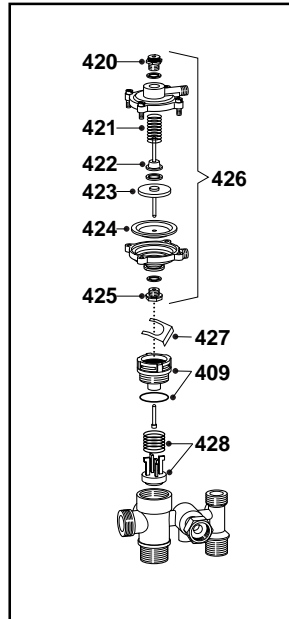
ER2002210002R03051

# DELIVERY UNITS

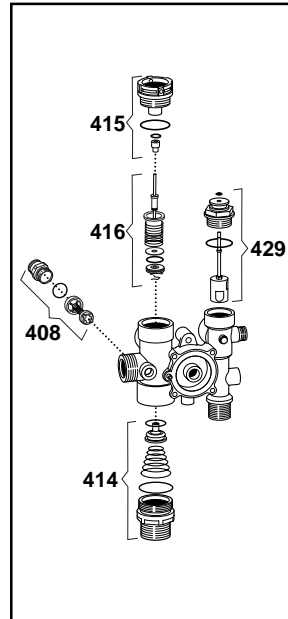
Code 998799



Code 999609



Code 999933



# DELIVERY UNITS

CODE	GROUP DESCRIPTION	NOTE
570533	Main flow group	
571643	3-way-pressure gauge valve group	
572628	3-way-pressure gauge valve group	
572703	3-way-pressure gauge valve group	
573121	3-way-pressure gauge valve group	
573160	Flow group	
573293	3-way-pressure gauge valve group	
573317	3-way-pressure gauge valve group	
573351	Flow group	
573826	3-way-pressure gauge valve group	
995867	Flow group	
996049	3-way-pressure gauge valve group	11
997058	3-way-pressure gauge valve group	
997148	Flow group	
998068	Flow group	
998069	3-way pressure gauge valve group	
998127	Flow group	
998178	Hydraulic group	
998456	Flow group	
998612	Flow group	
998613	Flow group	
998799	Hydraulic group	
999609	Flow group	
999933	Flow group	

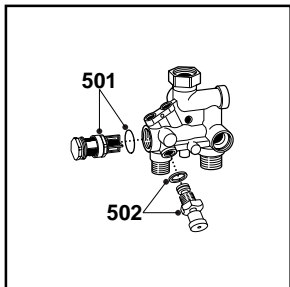
NOTE	DESCRIPTION
11	Parts 408 and 431 are not components of the unit and must be ordered separately

# DELIVERY UNITS

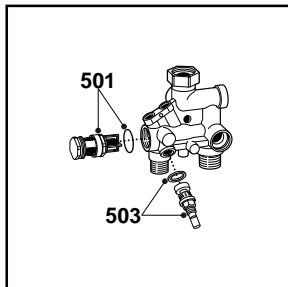
<b>PART.</b>	<b>CODE</b>	<b>DESCRIPTION</b>	<b>NOTE</b>
401	570714	Main flow switch service kit	
402	570713	Microswitch (main flow switch)	
403	573824	Bracket (M/Flow Micro Switch)	
404	571443	Central heating by-pass kit	
405	571986	Fitting (connection - 3 way valve motor)	
406	571447	3-Way spring kit	
407	571987	D.H.W. pressure switch kit	
408	998490	Central heating by-pass kit	
409	998013	Actuator bush (C.H.)	
410	571446	D.H.W. diaphragm valve	
411	571441	Heating pressure switch kit	
412	571442	D.H.W. pressure switch kit	
413	574248	Pressure cover	
414	998718	3-Way spring kit (C.H.)	
415	998974	Heating actuator bush	
416	998975	3-Way spring kit (D.H.W.)	
417	571445	Filling tap kit	
418	998972	3-Way spring kit (D.H.W.)	
419	998973	3-Way spring kit (D.H.W.)	
420	999956	Fitting	
421	999961	Spring	
422	999957	Plate	
423	999958	Plate	
424	999962	Membrane	
425	999959	Fitting	
426	999955	Pressure switch unit	
427	997077	Fixing clip (motor)	
428	999960	Valve switch shutter	
429	995311	Mixer unit kit	
430	996029	Bush with screws	
431	996045	By-pass fitting with O-ring	

# RETURN UNITS

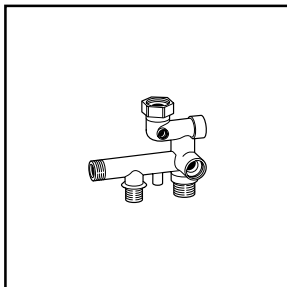
Code 572748



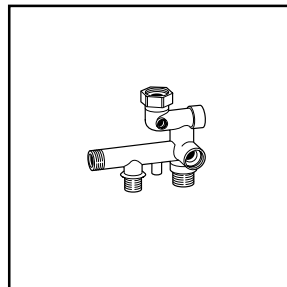
Code 573122



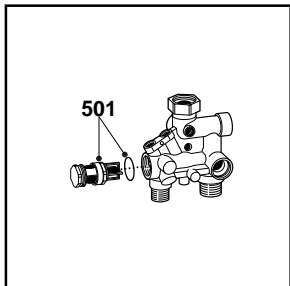
Code 573161



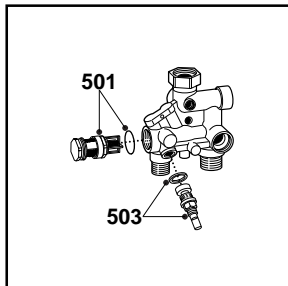
Code 573162



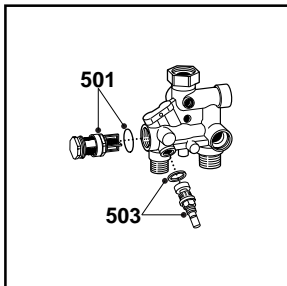
Code 573163



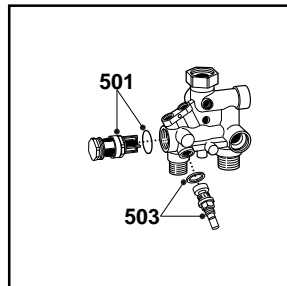
Code 573223



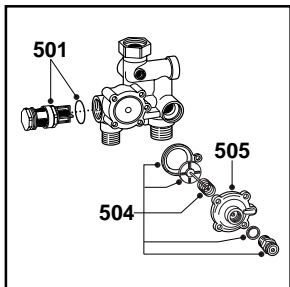
Code 573318



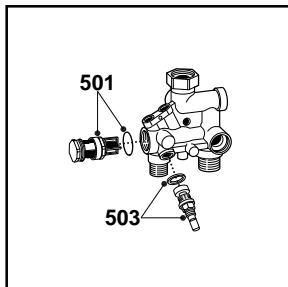
Code 573341



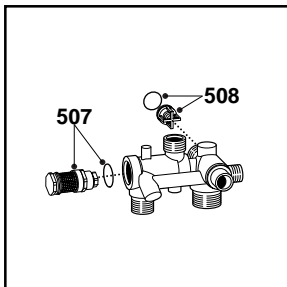
Code 573352



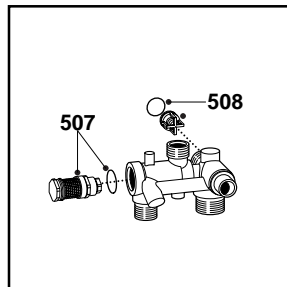
Code 573827



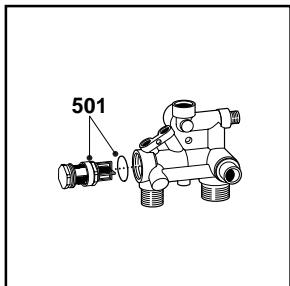
Code 995302



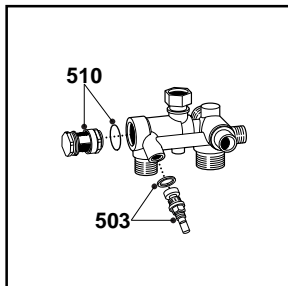
Code 995344



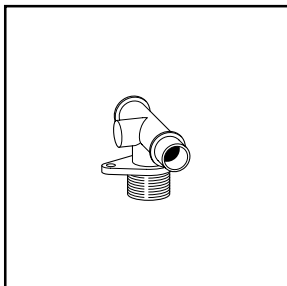
Code 995405



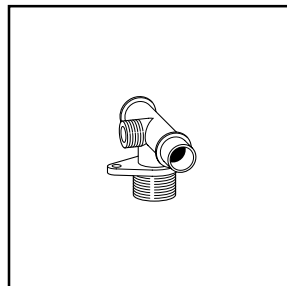
Code 995939



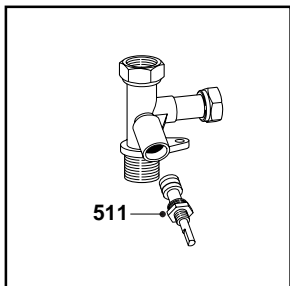
Code 996047



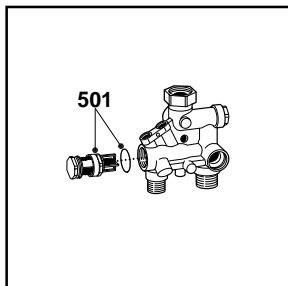
Code 996048



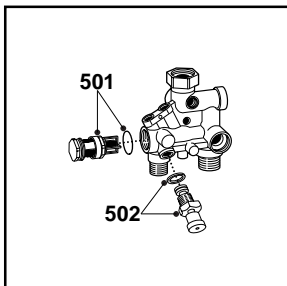
Code 996050



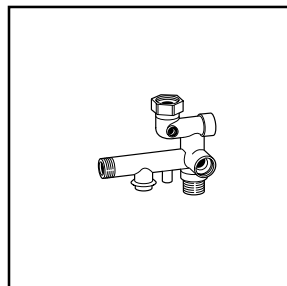
Code 997059



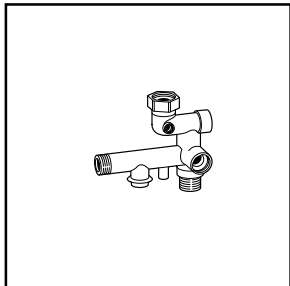
Code 997754



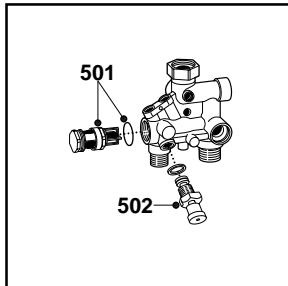
Code 997755



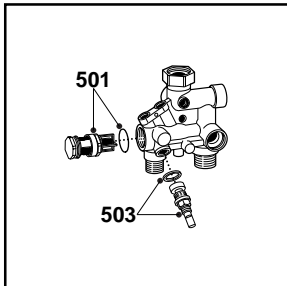
Code 997828



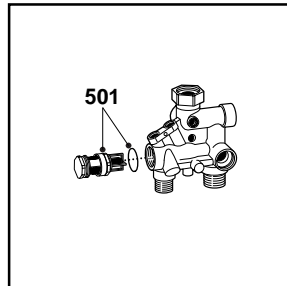
Code 998070



Code 998071

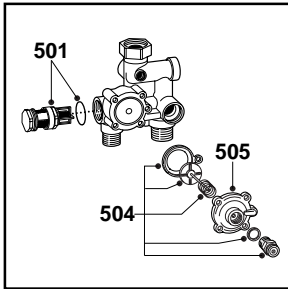


Code 998072

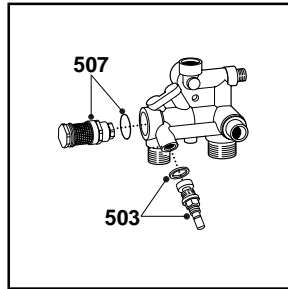


# RETURN UNITS

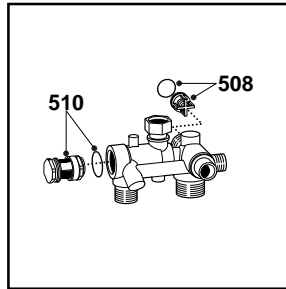
Code 998144



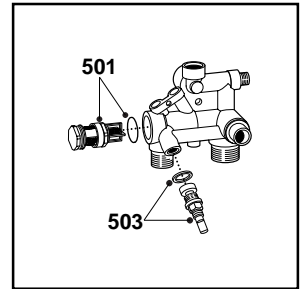
Code 998479



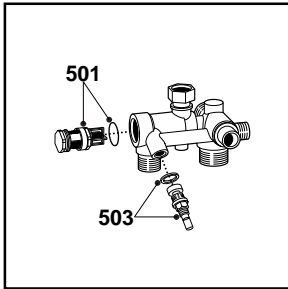
Code 998481



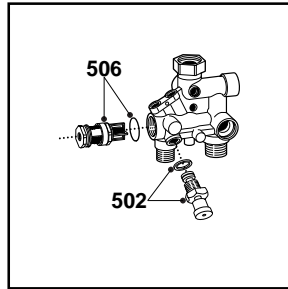
Code 998614



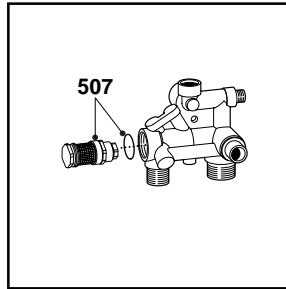
Code 998615



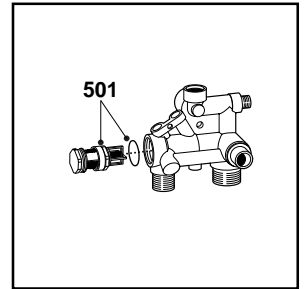
Code 998667



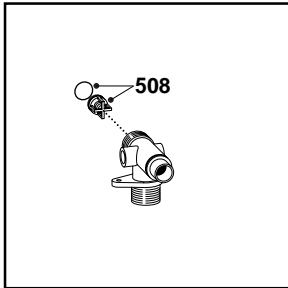
Code 998940



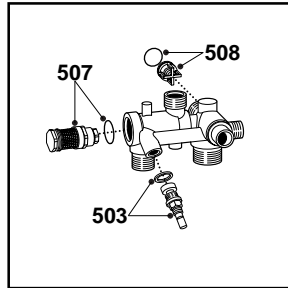
Code 999165



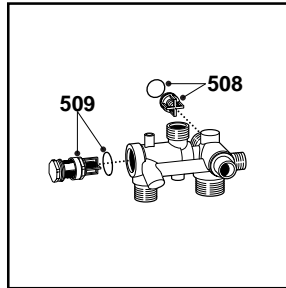
Code 999476



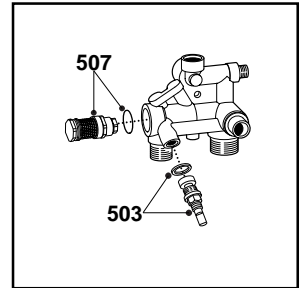
Code 999537



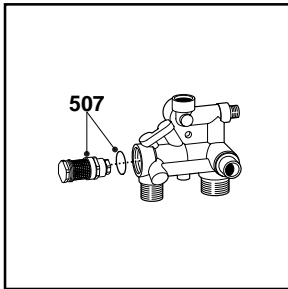
Code 999610



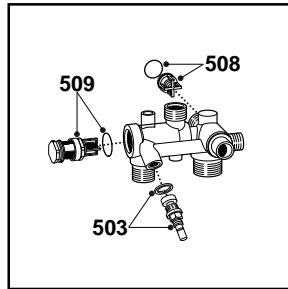
Code 999672



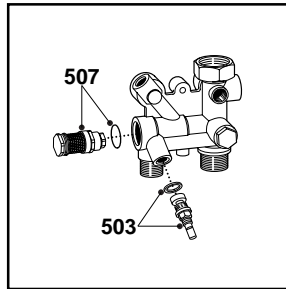
Code 999673



Code 999674



Code 999917



# RETURN UNITS

CODE	GROUP DESCRIPTION	NOTE
572748	Return group	
573122	Return group	
573161	Return group	
573162	Return group	
573163	Return group	
573223	Return group	
573318	Return group	
573341	Return group	
573352	Return group	
573827	Return group	
995302	Return group	
995344	Return group	
995405	Return group	
995939	Return group	
996047	Return group	
996048	Return group	
996050	Return group	
997059	Return group	
997754	Return group	
997755	Return group	
997828	Return group	
998070	Return group	
998071	Return group	
998072	Return group	
998144	Return group	
998479	Return group	
998481	Return group	
998614	Return group	
998615	Return group	
998667	Return group	
998940	Return group	
999165	Return group	
999476	Return group	
999537	Return group	
999610	Return group	
999672	Return group	
999673	Return group	
999674	Return group	
999917	Return group	

PART.	CODE	DESCRIPTION	NOTE
501	571444	D.H.W. actuator Kit	
502	572975	Push-button tap for external boiler hydraulic unit	
503	571445	Filling tap kit	
504	571441	Heating pressure switch kit	
505	574248	Pressure cover	
506	998831	D.H.W. actuator kit	
507	998941	D.H.W. actuator kit	
508	999473	By-pass Fugas	
509	999963	Depression element	
510	996070	D.H.W. actuator kit	
511	996071	Tap kit	