



## SPARE PARTS EXPLODED VIEW

### PUMPS

---

Edition 1 of 15 January 2001  
Revision 2 of 15 December 2001

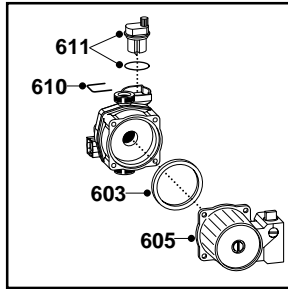


Replaces Edition 1 - Revision 1

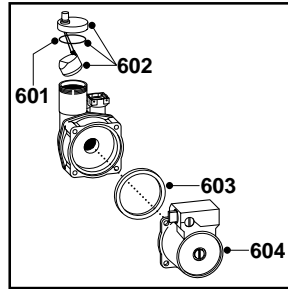
ER20012 10006R01021

# PUMPS

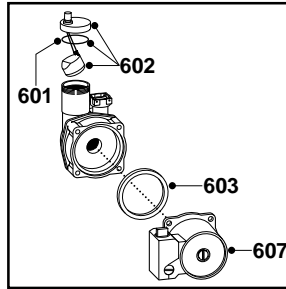
**Code 995868**



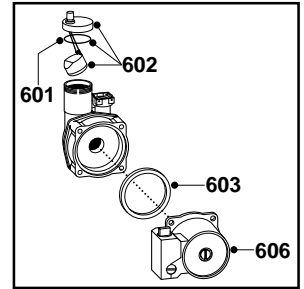
**Code 997179**



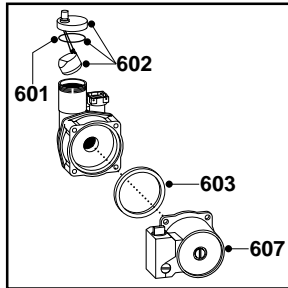
**Code 998835**



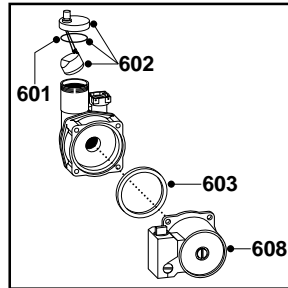
**Code 998836**



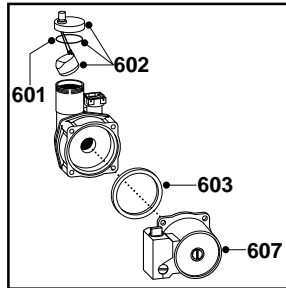
**Code 999085**



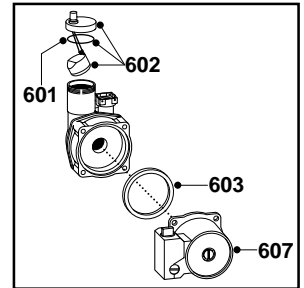
**Code 999091**



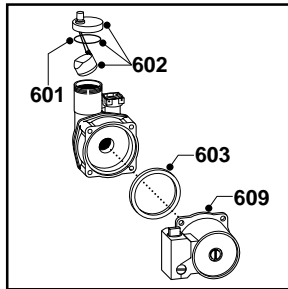
**Code 999541**



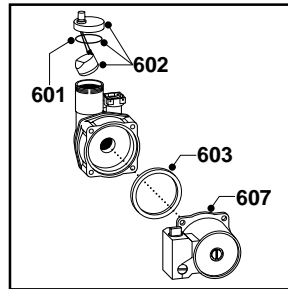
**Code 999591**



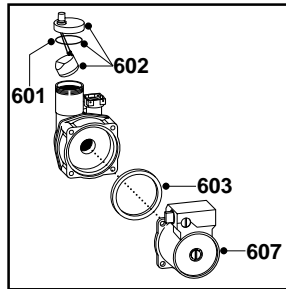
**Code 999623**



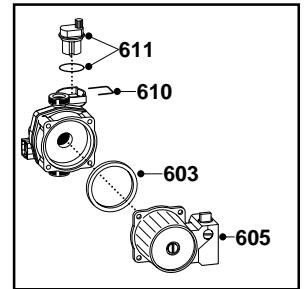
**Code 999688**



**Code 999713**



**Code 999902**



# PUMPS

CODE	DESCRIPTION	NOTE
995868	Pump (SHUDE 53-15-FF-CLF3)	
997179	Pump (NFHU 15/6)	
998835	Pump (PL. NFHUL 15/5-1-CRR9)	
998836	Pump (Gold 50V 1NFHUL-CRR9)	
999085	Pump (NFHUL 15/4.3-1-CRR9)	
999091	Pump (Gold 60 CRR9)	
999541	Pump (THULD 4.32 H9)	
999591	Pump (NFHUL 15/4.3-3-CRR9)	
999623	Pump (NFHUL 15/6-1-CRR9)	
999688	Pump (THULD 4,34 H9 THERM)	
999713	Pump (NFHUL 15/4.3-CLR-12H)	
999902	Pump (SHUDE 53-15-FF-CLF3)	

PART.	CODE	DESCRIPTION	NOTE
601	998644	O-ring (A.A.V.)	
602	998643	Auto Air Vent	
603	998738	Gasket (pump head)	
604	998962	Pump head (Wilo 15/65)	
605	995369	Pump head (SHUDE53-15-FF-CLF3)	
606	998961	Pump head (Gold 15/5)	
607	999111	Pump head (noiseless)	
608	999207	Pump head (Gold 15/6)	
609	995299	Pump head (NFHUL 15/6-1)	
610	995368	Air vent fork	
611	995367	Air vent with O-ring	