

Product Specification

DGI 6L CF ARISTON

Editor: MTS (China)
Version: 001

The information, including all related documents, drawings, etc., is confidential and is the property of MTS Group. It may not be copied or reproduced, or disclosed to any other party, except with prior written authorization of MTS Group.

No:		Title:	Product specification DGI 6L CF ARISTON		
Edition:	001	Date:	2006-12-30	Page:	1/6

Index

1. Codes
2. Generalities
3. Product packing
4. Booklet
5. Product section
6. Technical data

No:		Title:	Product specification DGI 6L CF ARISTON		
Edition:	001	Date:	2006-12-30	Page:	2/6

1. Codes

Code	Description	Note
3611512	DGI Fast 6L CF LPG ARISTON	(New logo)
3611511	DGI Fast 6L CF NG ARISTON	(New logo)

2. Product Generalities



Note: screen printing color is cool gray

Brand: ARISTON

Hot water output: 6L/min

Exhaust: Nature flue

Ignition: Electrical

Water control: Mechanical knob

Flame control: Mechanical knob

No:		Title:	Product specification DGI 6L CF ARISTON		
Edition:	001	Date:	2006-12-30	Page:	3/6

3. Product packing

Finish good

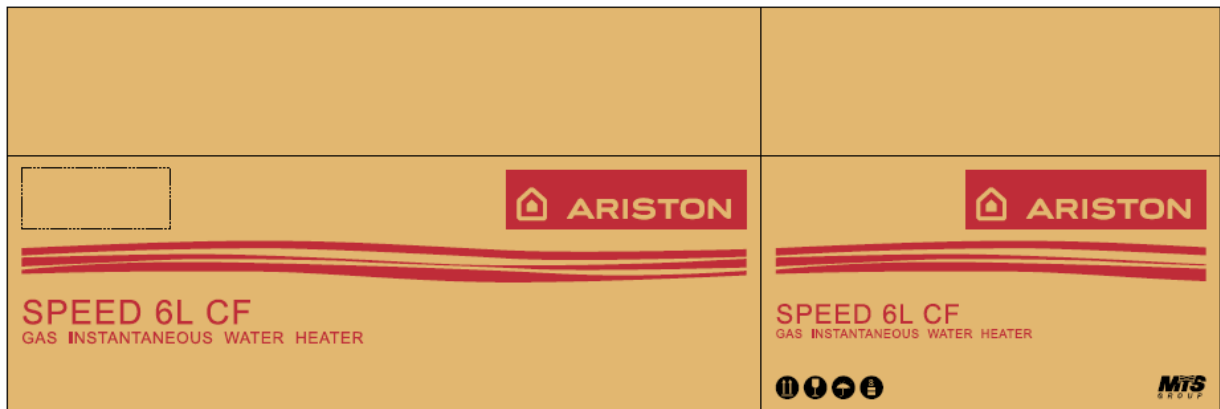
Carton material: 5 floors corrugated paper (normal)

Carton color: yellow (normal)

Language: English

Dimension: 558×340×190mm

Weight: 6.5Kg

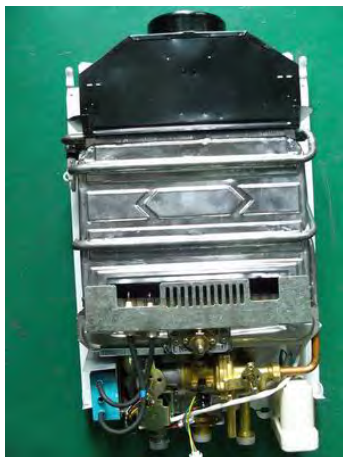


包装尺寸: 558x340x190mm

4. Booklet

English Version

5. Product section



No:		Title:	Product specification DGI 6L CF ARISTON		
Edition:	001	Date:	2006-12-30	Page:	4/6

5. Technical data

Model	6L CF
Hot water output(L/Min)	6
Heat input(KW)	12
Heat efficiency	>80%
Gas type	Liquefied petroleum gas (LPG) /Natural Gas
Install place	Indoor
exhaust	Natural flue
Ignition	Electrical
burning	Nature burning
Heat exchange	Convective+ radiant
Safety protection	Electronic
Water temperature control	Mechanical
Display	Light
Start-up	Open water valve
Rated voltage	DC3V
Water tie-in	G1/2
Gas tie-in	G1/2
Exhaust cover	Φ90mm
Net weight(Kg)	5.2kg
Gross weight(Kg)	6.5kg
Dimension (mm)	440×300×130
Colour	Bright white

Technical labels

Material: Aluminum foil paper

ATTENTION	
●	Do not install it in bathroom or sealed room
●	Please keep indoor air ventilating when running
●	Please read the manual booklet carefully before use
●	Please make sure that the gas type used fits this appliance.
Product:	Instantaneous gas water heater
Model:	6L CF
Gas used:	Nature gas
Gas supply pressure:	2.0KPa
Heat input:	12KW
Hot water output:	6L/min (ΔT=25° C)
Electric input:	DC3V
Water pressure:	0.04~0.3MPa

NG

No:		Title:	Product specification DGI 6L CF ARISTON		
Edition:	001	Date:	2006-12-30	Page:	5/6

Update Record

Date	Updated by	Version	Note
2006-12-30	Jonathan You / Shao Bo	001	