

:
E-10P
CM-5
CL-7
CL-11
CL-13
CL-156
CIP-11
CIP-13
CIP-156



1		2
2		3
3		4
3.1		5
4	(,)	PROMETEO CL 6
4.1		6
4.1.2		5 / 6
4.1.3		7, 10, 6
	11, 13, 15 /	
5		7
5.1		7
6		8
7		9
7.1		9
8		9
9	(')	PROMETEO 9
9.1		9
9.2		10
9.3		10
9.4		10
9.5		10
9.6		10
10		11
11		12
11.1		12
11.2		13
11.3		13
12		13
13		14
14		14
15		14
16		14
17		15
18		15
19		16
20		16
20.1		20
21		20
22		20

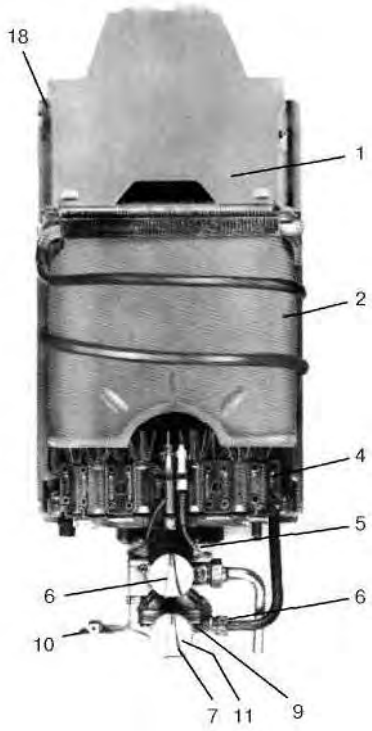
2.

Ferrol S.p.
Prometeo , - ,

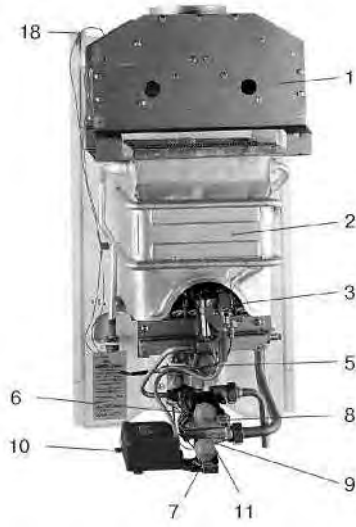
3.

Ferrol

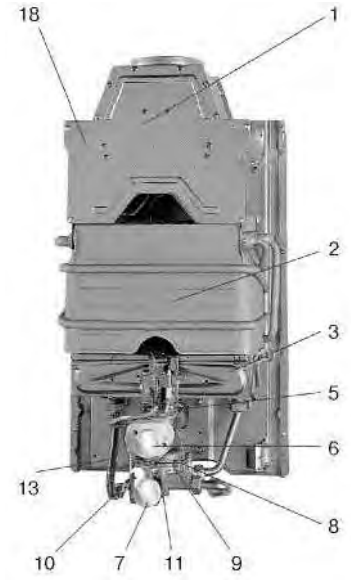
(. 1).



5 /



7 /



10, 11 13 /

3.1

1.

		CM-5	CL-7	CL-11	CIP-11	CL-13	CIP-13	CL-156	CIP-156	E-10P
		5 / 8,7	7 / 11,5	11 / 19,2	11 / 19,2	13 / 22,6	13 / 22,6	15 / 26,16	15 / 26,16	10 / 17,4
		125 / /	165 / /	275 / /	275 / /	325 / /	325 / /	375 / /	375 / /	250 / /
1	() .									
2										
3										
4										
5										
6	" / /	/	/	/	/	/	/	/	/	/
7										
8										
9	() .	/	/	/	/	/	/	/	/	/
10	:/	/	/	/	/	/	/	/	/	/
11										
13	:/	/	/	/	/					/
14										
15										
16	() .									
18	() .									
19										
20										
21	() .									
22										

4. (,)

4.1 :

1. , .

2. .

3. .

4.1.2

1. ,

/),

5 / :

«•» (

«4».

2. ; ,

3. .

10

«4».

CM-5



4. ,

«4»,

).

«0» (,

5. «0»

4.1.3

13, 15 / :

1. ,

/), ,

7, 10, 11,

«•» (

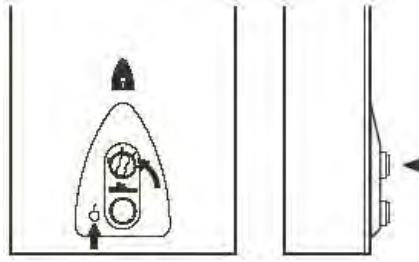
«4».

2. , .

3. , .

4. 5 , .

CL-7
 CL-11
 CL-13
 CL-156
 CIP-11
 CIP-13
 CIP-156



5.

10

«4».

5.

CL-7, CL-11, CL-13, CL-156

1. «0» (...)

«0» ...

2.

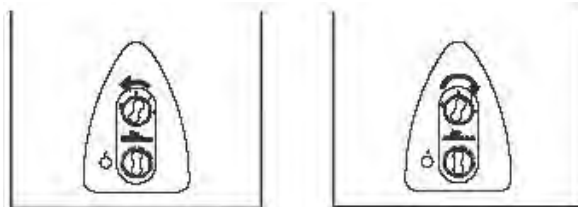
«0»

3.

«0»

4.

CL-7
 CL-11
 CL-13
 CL-156



5.1

Ferrol

6.

2.

		CM-5	CL-7	CL-11	CIP-11	CL-13	CIP-13	CL-156	CIP-156	E-10P
1		10,38	13,2	22,2	22,2	27	27	29,55	29,55	20,7
2	, min/ max, .	-/ 8,72	6,1/ 11,55	9,4/ 19,2	9,4/ 19,2	11,35/ 22,7	11,35/ 22,7	12,7/ 26,1	12,7/ 26,1	-/ 17,4
3	, 40° (t=25°), min/ max, (/).*	-/ 5	3,5/ 6,62	5,4/ 11	5,4/ 11	7,8/ 13	7,8/ 13	7,5/ 15	7,5/ 15	-/ 10
4	, 65° (t=50°), min/ max, (/).*	-/ 2,5	-/ 3,32	2,75/ 5,5	2,75/ 5,5	3,5/ 6,5	3,5/ 6,5	3,75/ 7,5	3,75/ 7,5	-/ 5
5	, 40° (t=25°), min/ max, (/).**	-/ 0,5	0,4/ 0,95	0,4/ 1	0,4/ 1	0,45/ 1,2	0,45/ 1,2	0,45/ 1,5	0,45/ 1,5	-/ 0,75
6	, 65° (t=50°), min/ max, (/).**	-/ 0,2	-/ 0,35	0,3/ 0,4	0,3/ 0,4	0,3/ 0,45	0,3/ 0,45	0,25/ 0,4	0,25/ 0,4	-/ 0,4
7		10	10	10	10	10	10	10	10	10
8	, min/ max, / . , min/ max, / . , min/ max, / .	-/ 18,27 -/ 7 -/ 0,81	13,95/ 23,26 5,39/ 8,99 0,624/ 1,04	19,58/ 39,15 7,56/ 15,12 0,87/ 1,75	19,58/ 39,15 7,56/ 15,12 0,87/ 1,75	24/ 48,16 9,3/ 18,84 1,07/ 2,15	23,66/ 47,83 9,18/ 18,84 1,06/ 2,13	26/ 52,16 10,06/ 20,11 -/-	26/ 52,16 10,06/ 20,11 -/-	-/ 36,47 -/ 16,08 -/ 1,63
9	():	13 37 28-30	13 37 28-30	13 37 28-30	13 37 28-30	13 37 28-30	13 37 28-30	13 37 -/-	13 37 -/-	13 37 28-30
10	(220/ 230 50) .				2*1,5		2*1,5		2*1,5	
11	:	568 248 141	580 306 220	660 360 206	660 360 206	660 360 248	660 360 248	660 360 248	660 360 248	660 360 206
12	, .	5	9	11	11	19	19	20,5	20,5	10
13		99AQ186	99BN796	99 22	99 22	99 25	99 25	99 826	99 826	99Q 167

*
**

15° .

7.

7.1

8.

«•».

Ferrol

.(. .1 .5).

5

1.

2.

3.

().

).

(

9.

(') PROMETEO

9.1

1.

2.

3.

4.

1,5

(

).

9.2.

C -11, C -13
5.1.

9.3.

C -11, C -13

(

5

, -

(

9.4.

9.5.

7.

(

),

« I »

« I »

() ,

()

9.6

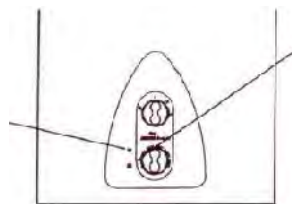
« I ».

«•»,

CIP-11
CIP-13



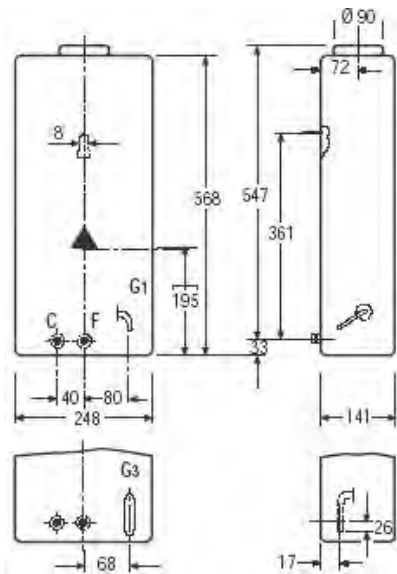
()



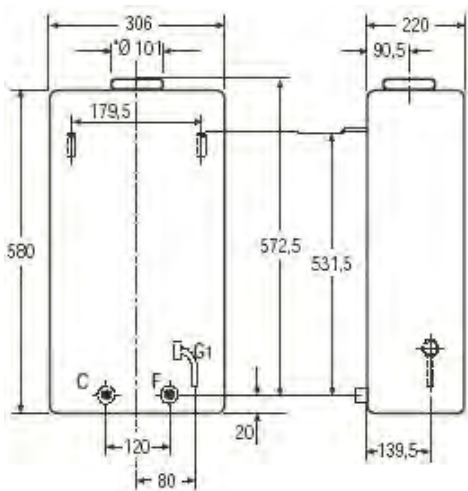
:

10.

5 /

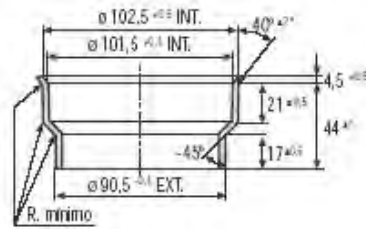


7 /



- 1/2"
 F - 1/2"
 G1 - :
 Ø 12
 / Ø 15
 * -

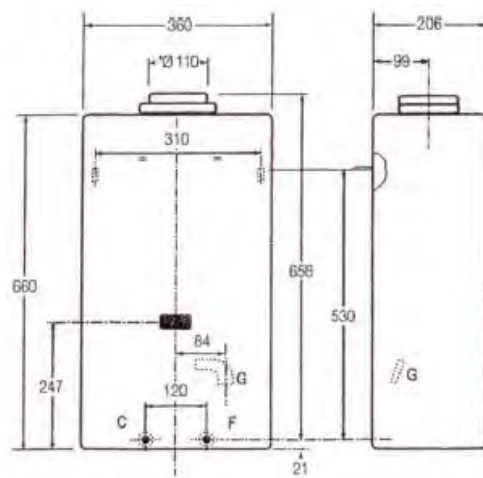
Ø 90 ... Ø 100



Ø 100

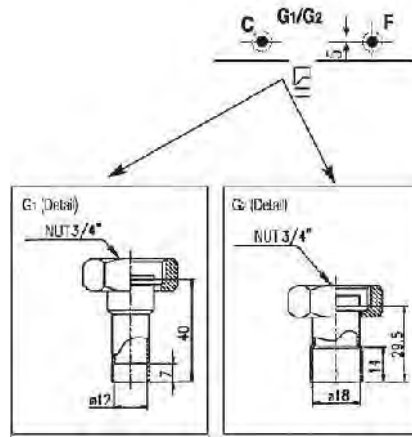
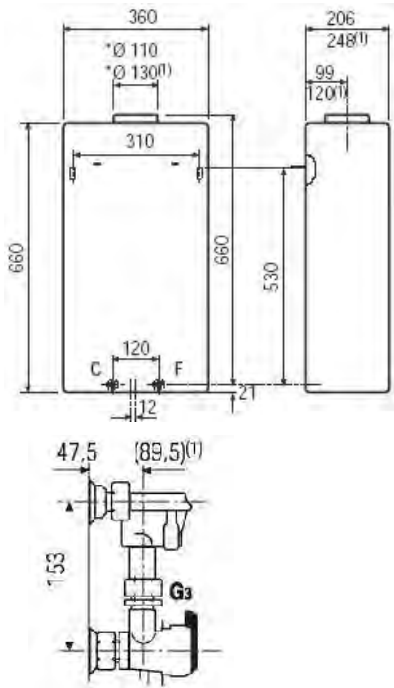
- 1/2"
 F - 1/2"
 G1 - :
 Ø 12
 / Ø 15
 G3 -

10 /



- 1/2"
 F - 1/2"
 G1 - :
 Ø 12
 / Ø 15
 * -

11, 13 /



-
 F -
 G1 -
 * -

1/2"
 1/2"

:
 Ø 12
 / Ø 15

11.

Ferrol

11.1

85°

11.2

(- 3/4".)

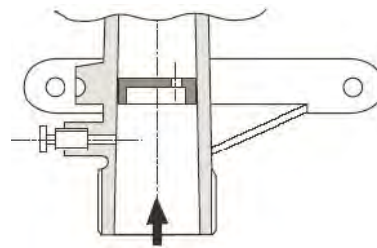
1/2",

11.3

: CM-5, CL-7, E-10P.

« »
().

(
G3



().

: CL-11, CL-13, CIP-11, CIP-13.

3/4" (. G1)

G2).

20 (.

13 /).

G3

3/4" (

11 / ,

1/2".

12.

CM-5.

361

: E-10P, CL-11, CL-13, CIP-11, CIP-13.

, 310

530

((10, 11, 13 /) . 5 /)
1,5 .

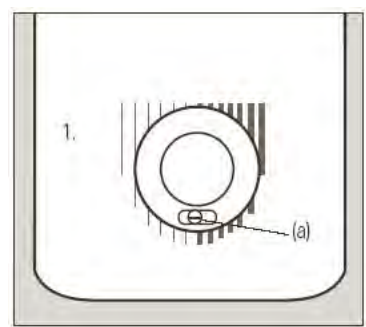
13.

CM-5. , Ø90 .
: CL-11, CIP-11. , Ø110
: CL-13, CIP-13. Ø120 .
Ø140 . , Ø130

14.

15.

(
) . ()
(
(1).



16.

10-15

17.

(),

1-2

Ferrol ,

Ferrol ;

)

(

30-40

18.

+ 5 ° .

(
)

19.

1.

2.

3.

4.

5.

6.

1.

2.

3.

4.

1.

2.

3.

4.

55°

20.

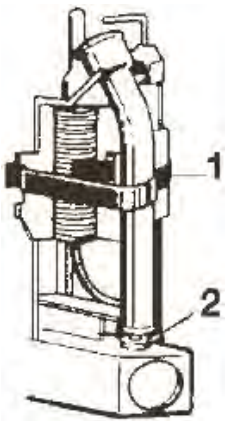
Ferrol

Ferrol .

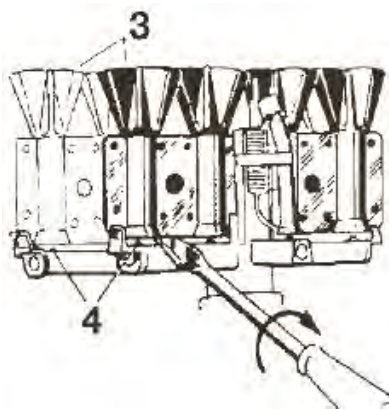
Ferrol

CM-5.

- 1.
- 2.
- 3. 1 (.1),
- 4.
- 5. 3, 4 (.2).
- 6.
- 7. 3, 4.
- 8.
- 5 6 (.3)
- 9.
- 10.
- 11.



.1



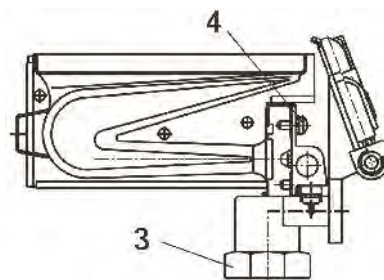
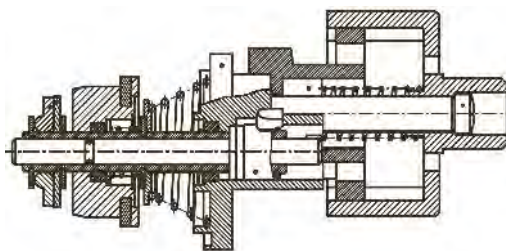
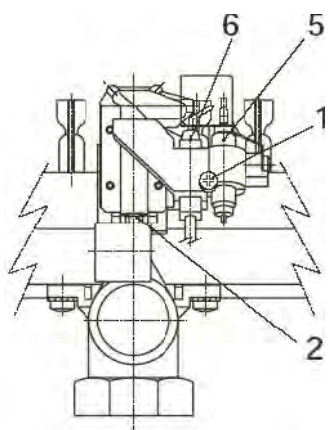
.2



.3

CL-7.

- 1.
- 2.
- 3. 1 (.4),
- 4. 2 (.4)
- 5. (.5)
- 6. 3 4 (.6),
- 7.
- 8.
- 9.
- 5 6 (.4)
- 10.
- 11.
- 12.



.4

.5

.6

E-10P.

1.

2.

3.

4.

5.

6.

7.

8.

5

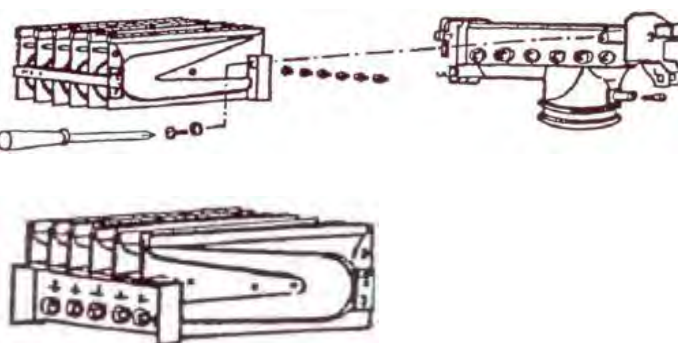
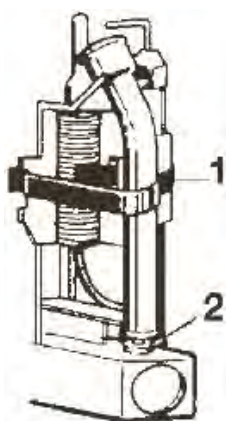
6 (.8)

9.

10.

11.

1 (.7),
2 (.7)
(.9).



.7

.8

.9

: CL-11, CL-13, CIP-11, CIP-13, CL-156, CIP-156.

1.

2.

3.

4.

(.10).

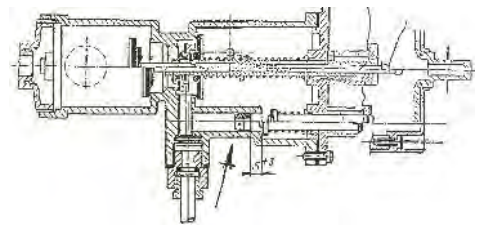
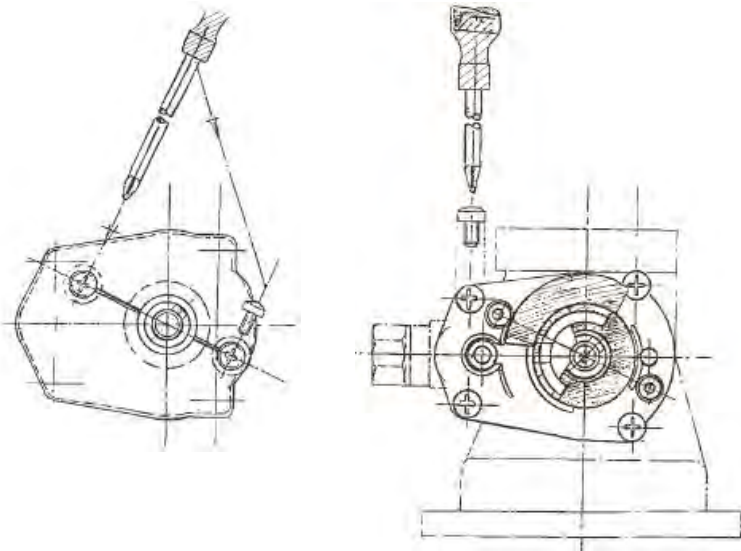
(.11).

- 5.
- 6.
- 7.
- 8.
- 9.
- 10.
- 11.
- 12.
- 13.
- 14.
- 15.

(.12).

(.13).

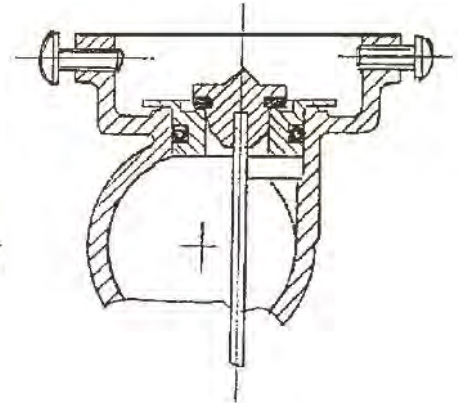
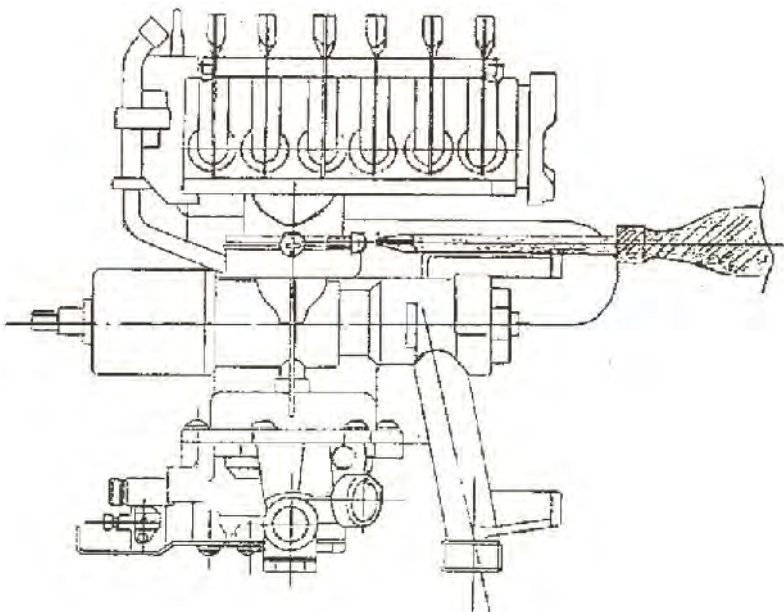
(.14).



.10

.11

.12



.13

.14

20.1

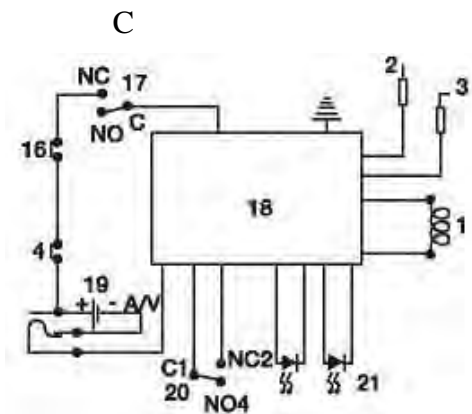
3

		CM-5		CL-7		E-10P	
			-		-		-
1	, /	0,89/ 6054	0,55/ 5095	1,08/ 6908	0,71/ 6907	1,10/ 5035	0,68/ 5158
2	, /	0,30/ 5067	0,20/ 5255	0,30/ 5067	0,20/ 5255	0,30/ 5067	0,20/ 5255

4

		CL-11, CIP-11		CL-13, CIP-13		CL-156, CIP-156	
			-		-		-
1	∅ min /	/ 6942	5513 /	/ 5784	5659 /	/ 5784	5659 /
2	, /	1,08/ 6908	0,71/ 6907	1,10/ 5036	0,68/ 5158	1,13/ 10143	0,71/ 6907
3	, /	0,30/ 10145	0,20/ 10144	0,30/ 10145	0,20/ 10144	0,30/ 10145	0,20/ 10144
4	*	6630	6911	6640	5856	10147	10146

21.



- 1 –
- 2 –
- 3 –
- 4 –
- 16 –
- 17 –
- 18 –
- 19 –
- 20 –
- 21 –

22.

1,5 ()

: .20

, — .
:
, , ' 5 ,
. . ,
, .
:
, , ,
. .
:
. . . .

- 1.
- 2.
- 3.
- 4.
- 5.
- 6.
- 7.
- 8.
- 9.

,
(,).
,

- 1.
- 2.
- 3.
- 4.

/ ,

()

, «•».

- ,