

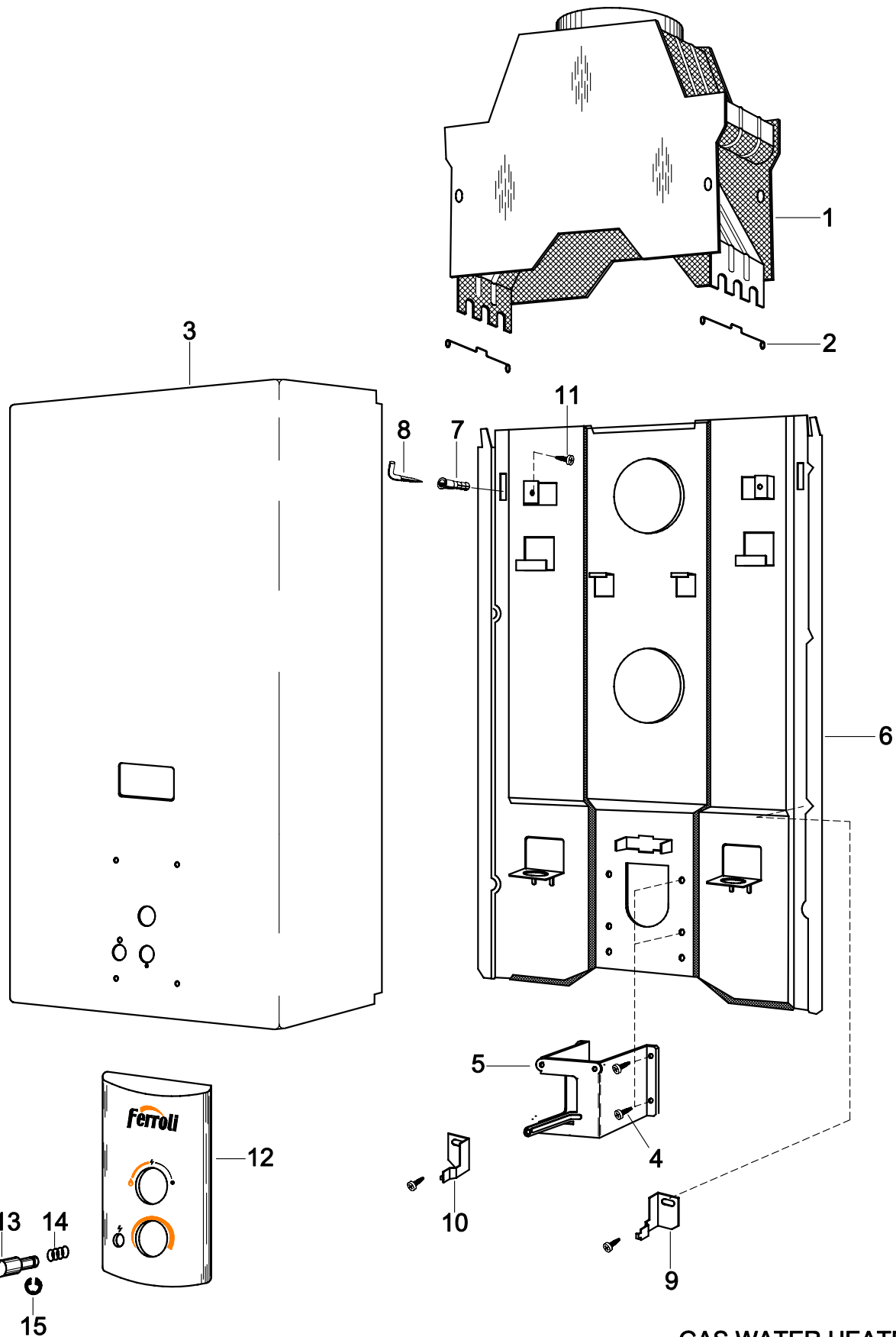


**SPARE PARTS FOR GAS WATER HEATERS  
E-10P (RU) (UA)**

No.	DENOMINACION DESIGNATION - DENOMINATION	CODIGO CODE	No.	DENOMINACION DESIGNATION - DENOMINATION	CODIGO CODE
1	DRAUGHT DIVERTER E-10	6185	48	GAS VALVE SPRING	5017
2	FIXING SPRING	6476	49	VALVE PLATE	5062
3	EXTERNAL COVER	6483	50	WASHER 19 X 13 X 1,5	5087
4	SCREW BZ 4,8 X 13	5368	51	CORK WASHER	5264
5	GAS BODY SUPPORT	5787	52	O-RING 17,5 X 1,5	8747
6	BACK SUPPORT 10	10402	53	WASHER 9,63 X 3,63 X 2,62	5324
7	FISCHER PLUG	5373	54	ASSEMBLED GAS VALVE MECHANISM	10022
8	ANGLE SCREW	5372	55	POSITIONNING LEVER	8749
9	RIGHT MIXER FIXATION BRACKET	6264	56	SUPPORT SLEEVE	8750
10	LEFT MIXER FIXATION BRACKET	6265	57	LEVER SPRING	8615
11	SCREW BZ 4,8 X 9,5	5641	58	DRAGGING PUSHER	8751
12	FRONT DECOR PLATE	10756	59	TAPTITE SCREW M 3 X 6	8543
13	PIEZO BUTTON	10757	60	GAS KNOB	10759
14	PUSHING SPRING	6089	61	NATURAL GAS CONNECTION	8754
15	FIXING RING	5899	62	GAS ENTRY DIAPHRAGM Ø 7	10160
16	HEAT EXCHANGER	6188	63	THERMOELECTRIC VALVE BODY	5244
17	O-RING 1,8 X 1,5	5117	64	GAS PRESSURE TESTING SLEEVE	5489
18	SEPARATION SLEEVE	5242	65	SCREW AZ 4,8 X 13	5368
19	MEMBRANE ROD	5241	66	MAGNETIC COIL GROUP	5267
20	CAP WATER BODY	5240	67	CENTERING O-RING	5820
21	MEMBRANE SUPPORT PLATE	5317	68	NUT M 24 X 1,5	5327
22	RUBBER MEMBRANE	5239	69	SCREW M 4 X 10	5398
23	FIBRE WASHER 18 X 13 X 2	5349	70	PIEZO LIGHTER	6505
24	CONNECTION TUBE	5369	71	PIEZO SUPPORT	6092
25	SELECTOR KNOB	10758	72	SCREW B 3,5 X 6,5	5370
26	SCREW M 4 X 10	5285	73	COMPLETE THERMO-ELEMENT	8544
27	WATER FLOW TOP WASHER	5306	74	THERMOSTAT 100° C	6072
28	WATER FLOW SELECTOR	5238	75	SCREW B 2,9 X 6,5	5731
29	O-RING 7,6 X 1,8	5356	76	MULTI-GAS MIXER LEFT SIDE	6268
30	SCREW M 5 X 12	5428	77	WASHER 18 X 13 X 3,5	5643
31	RUBBER WASHER 18 X 12 X 1	5316		INSTRUCTIONS HANDBOOK	10761
32	WATER THROTTLE	5821		CARTON BOX	10767
33	WATER FILTER	6924		SUPERIOR STYROPOR PROTECTOR	5909
34	COLD WATER STOPCOCK	5424		LOWER STYROPOR PROTECTOR	5910
35	COLD WATER ENTRY TUBE	5227		ACCESSORIES BAG	10277
36	ASSEMBLED WATER BODY	5063		DATA LABEL N.G.	10768
37	MEMBRANE SLEEVE 11,8	5112		IDENTIFICATION LABEL N.G.	10769
38	FLEXIBLE CONNECTION HOSE	5272		GAS TYPE LABEL N.G.	10770
39	PILOT TUBE	5394		AVERTISSEMENTS LABEL	10766
40	PILOT PIPE SUPPORT	5258		DATA LABEL GOST	10165
41	NG PILOT NOZZLE	8978			
42	MULTI-GAS MIXER RIGHT SIDE	5844			
43	BURNER NOZZLE, NATURAL GAS 1,23	5035			
44	GAS PRESSURE TEST SCREW	5003			
45	BURNER BODY	5226			
46	NUT M 36 X 1,5	5319			
47	RETAINING RING	5064			

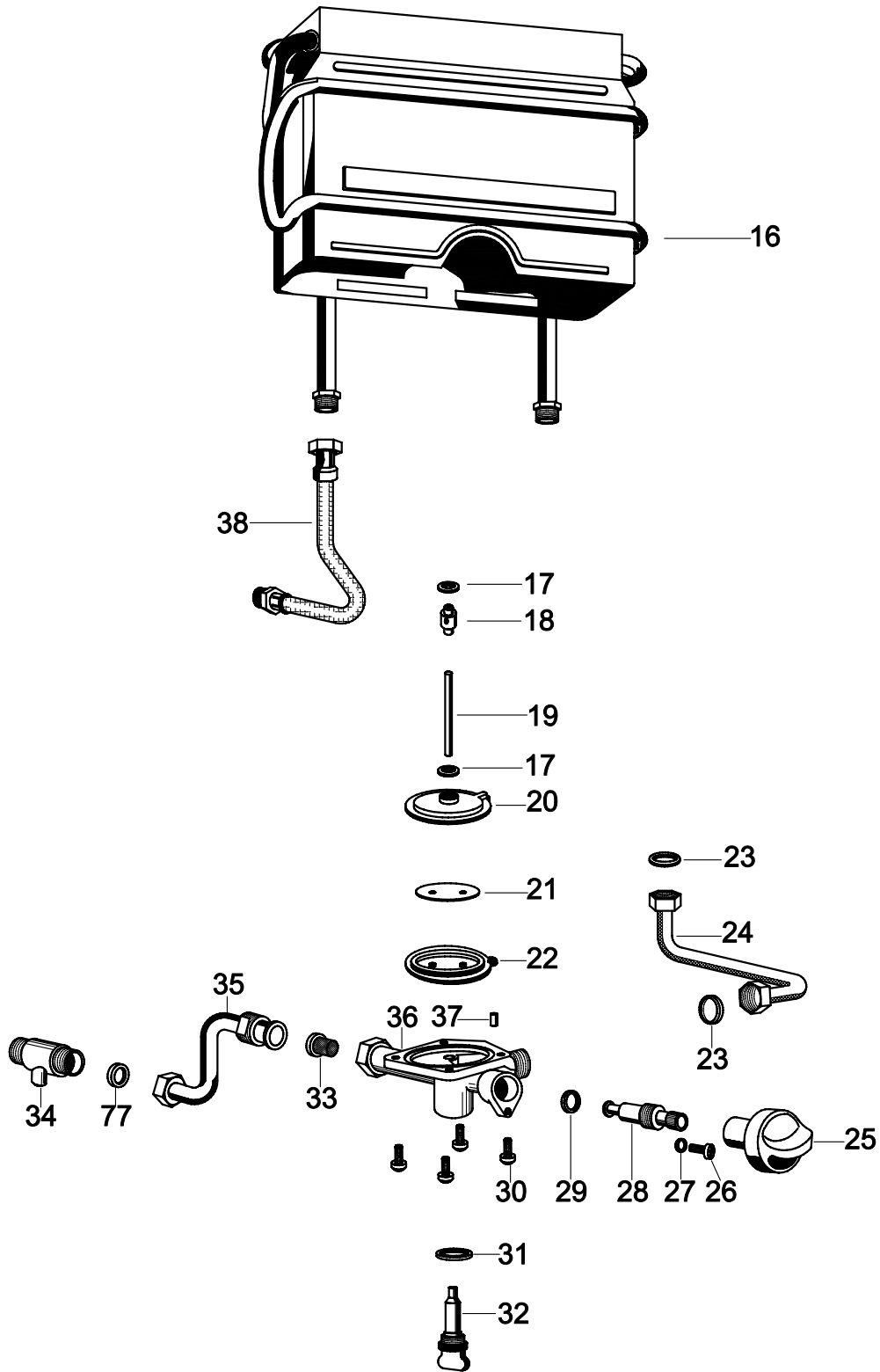
	Modific.	Modific.	Modific.	Modific.	Modific.	Modific.	Modific.
Fecha	06/10/06						
V°.B°.	<i>[Signature]</i>						

**Modelo:**  
**Model:** E-10P (RU) (UA)  
**Modele:**



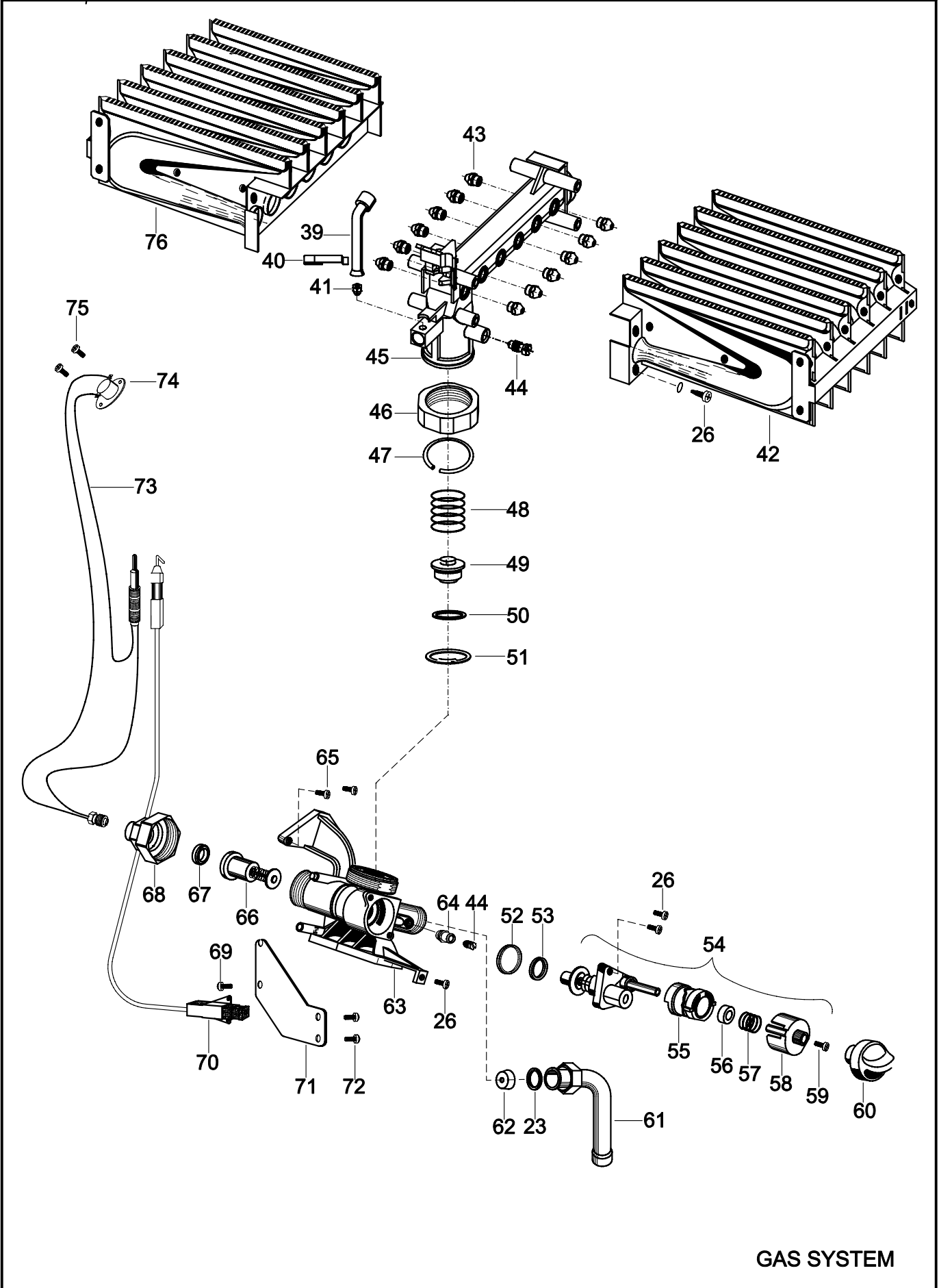
**GAS WATER HEATER**

	Modific.	Modific.	Modific.	Modific.	Modific.	Modific.	Modific.	Modelo:
Fecha	6/10/06							Model: E-10P (RU) (UA)
V°.B°.	<i>Ant.</i>							Modelo:



WATER SYSTEM

	Modific.	Modific.	Modific.	Modific.	Modific.	Modific.	Modific.	Modelo:
Fecha	6/10/06							Model: E-10P (RU) (UA)
V°.B°.	<i>[Signature]</i>							Modele:



GAS SYSTEM