



DIVAtop F32

LISTA PEZZI DI RICAMBIO

SPARE PART LIST

ERSATZSTEILE

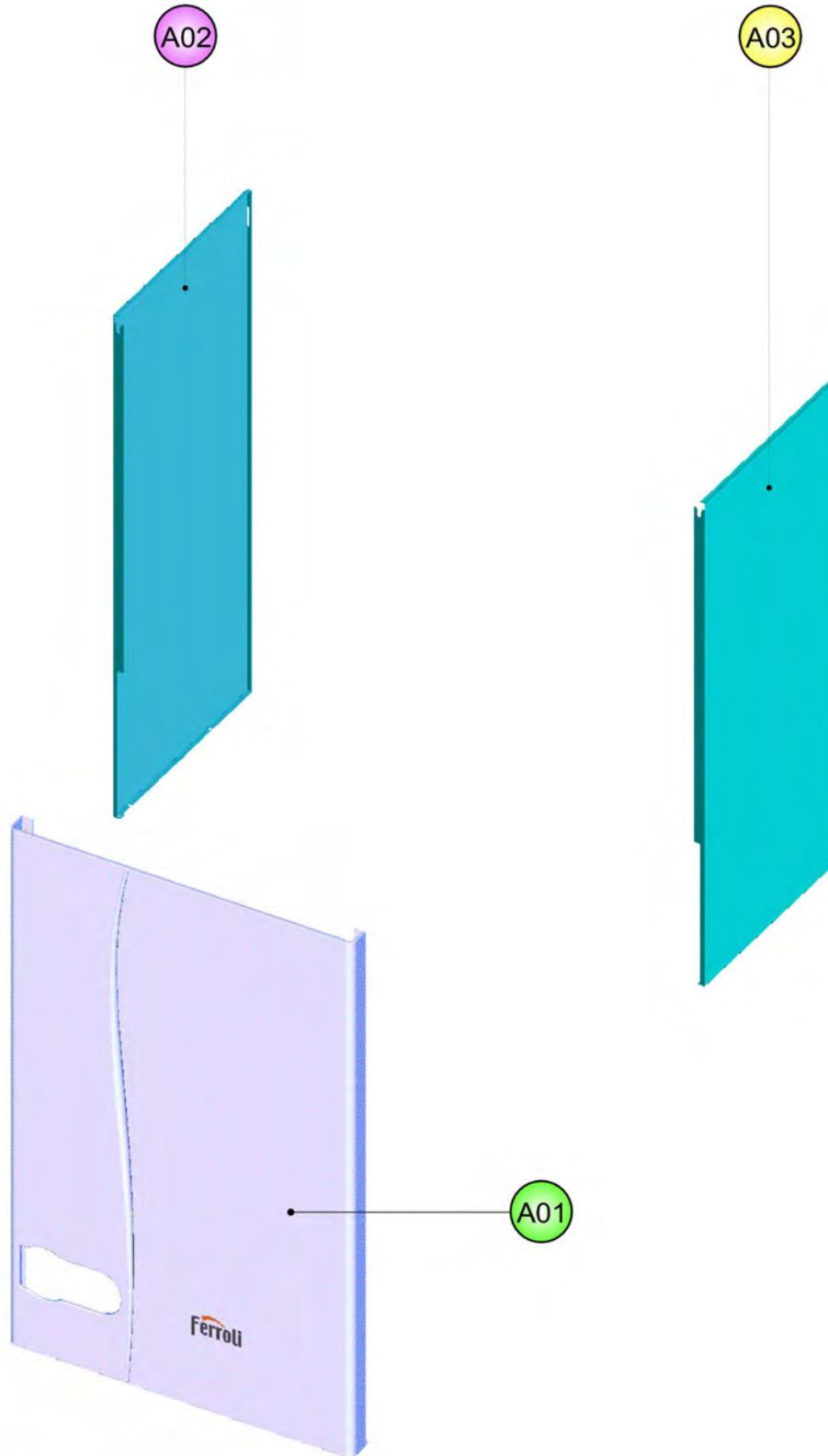
LIJST ONDERDELEN

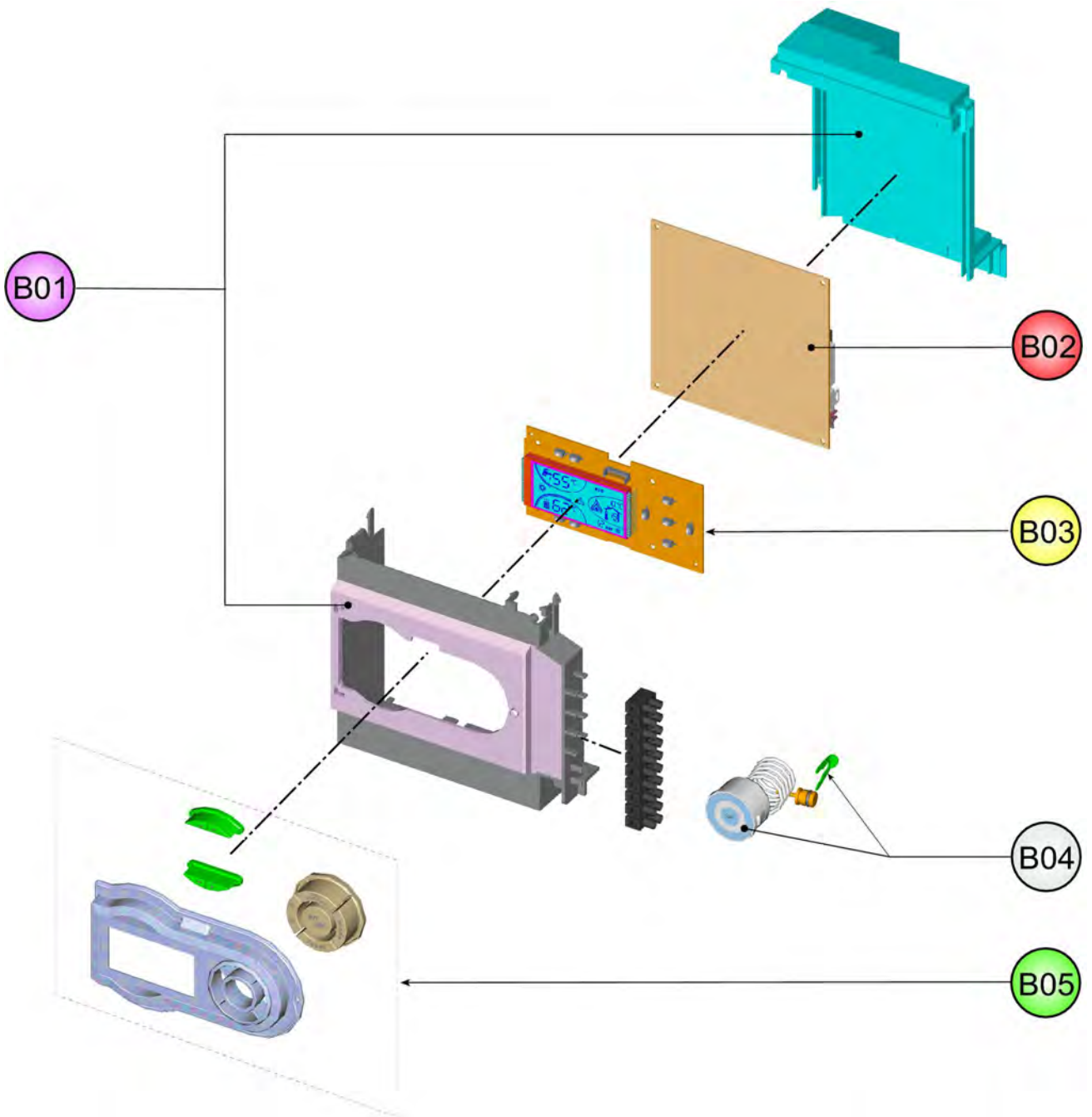
LISTE PIECES DETACHES

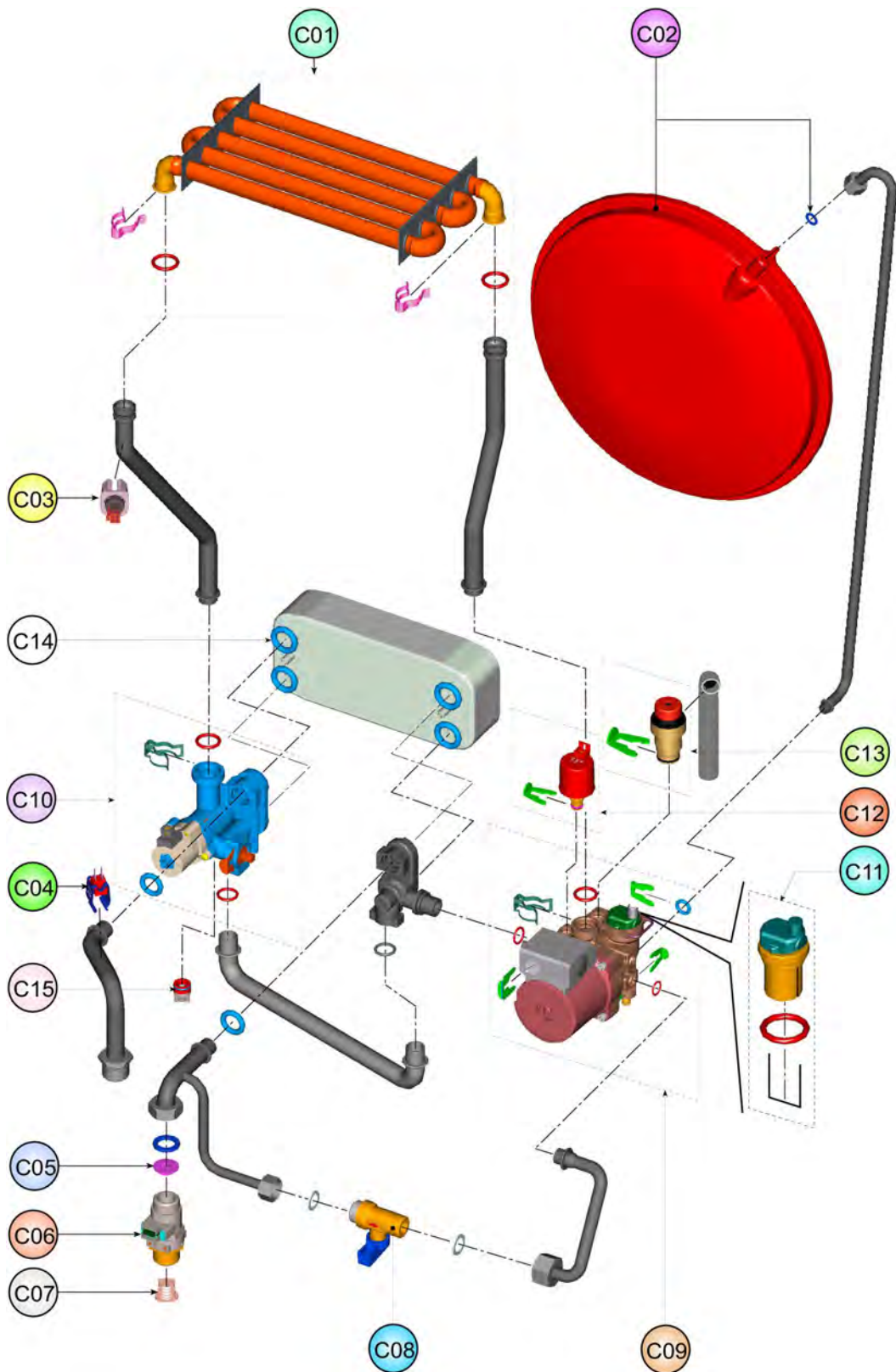
LISTA PIEZAS DE REPUESTO

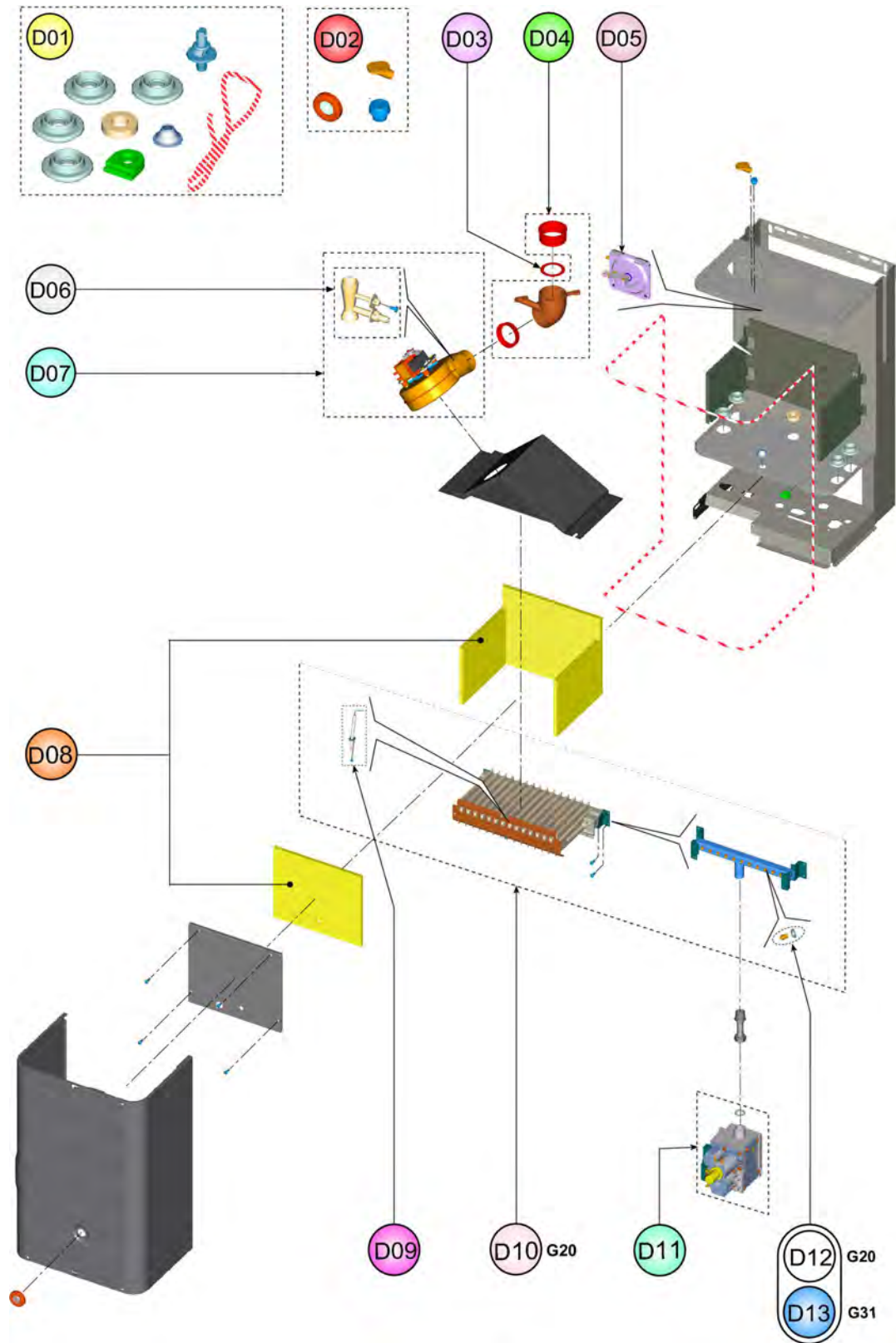


CODICE	EDIZIONE	MERCATO
30K0340000	09/11/2006	IT-ES-A3









LISTA PEZZI

POS.	CODICE	DESC.	QT.
A01	39820370	KIT PANNELLO A."FOL" (31116580)	1
A02	39820360	KIT FIANCO SIN. (31118420)	1
A03	39820350	KIT FIANCO DEX. (31118400)	1
B01	39820380	KIT SCATOLA EL."FOL" (35012290)	1
B02	39820400	KIT CENTRALINA DBM03 (36507980)	1
B03	39820410	KIT SCHEDA EL.DSP05 (38321600)	1
B04	39818210	KIT IDROMETRO (36402070)	1
B05	39820390	KIT PORTASCHEDA (35011950)	1
C01	39822210	KIT SCAMB.MONOTERM. (37404090)	1
C02	39809690	KIT VASO ESP.10Lt. (36802740)	1
C03	39819550	KIT SONDA TEMP. (36200730)	1
C04	39810230	KIT SONDA TEMP.SAN. (36200640)	1
C05	39813220	KIT 5 REG.PORT.15Lt. (36902100)	1
C06	39820450	KIT FLUSSOM.ELTEK (36402180)	1
C07	39820460	KIT 5 FILTRI FLUSS. (34014301)	1
C08	39808980	KIT RUB.3/8" Tp.5014 (36901470)	1
C09	39820900	KIT POMPA 15-60 FPL (36600150)	1
C10	39820440	KIT VALV.3VIE (36902240)	1
C11	39818220	KIT V.ARIA (39404380-39404730)	1
C12	39818770	KIT TRANSDUTT.PRESS. (36402100)	1
C13	39818270	KIT VALV.SIC. (39404720)	1
C14	39820910	KIT SCAMBIATORE 20P. (37404030)	1
C15	39818790	KIT 10 VALV.N/R. (36902190)	1
D01	39822600	KIT GUARN.CALD. Sr.ACF7	1
D02	39820480	KIT SPIA (35102690-35102350)	1
D03	39819690	KIT DIAFR.FUMI (32700870-890)	1
D04	39817990	KIT CURVA USC.FUMI (33301610)	1
D05	39817510	KIT PRESS.DIFF.ARIA (36402050)	1
D06	39808471	KIT PRESE (35101310-35101323)	1
D07	39818020	KIT VENTIL. (36601871)	1
D08	39819720	KIT ISOL.CAM.COMB. Sr.ABF7	1
D09	39819430	KIT Elettrodo ACC. (36702890)	1
D10	39819730	KIT BRUC.15R.m. (37608930)	1
D11	39812190	KIT VALV.VGU 54A1109 (36800400)	1
D12	39819700	KIT 15 UG.1,35 m. (34009821)	1
D13	39819710	KIT 15 UG.0,79 gpl (34013300)	1